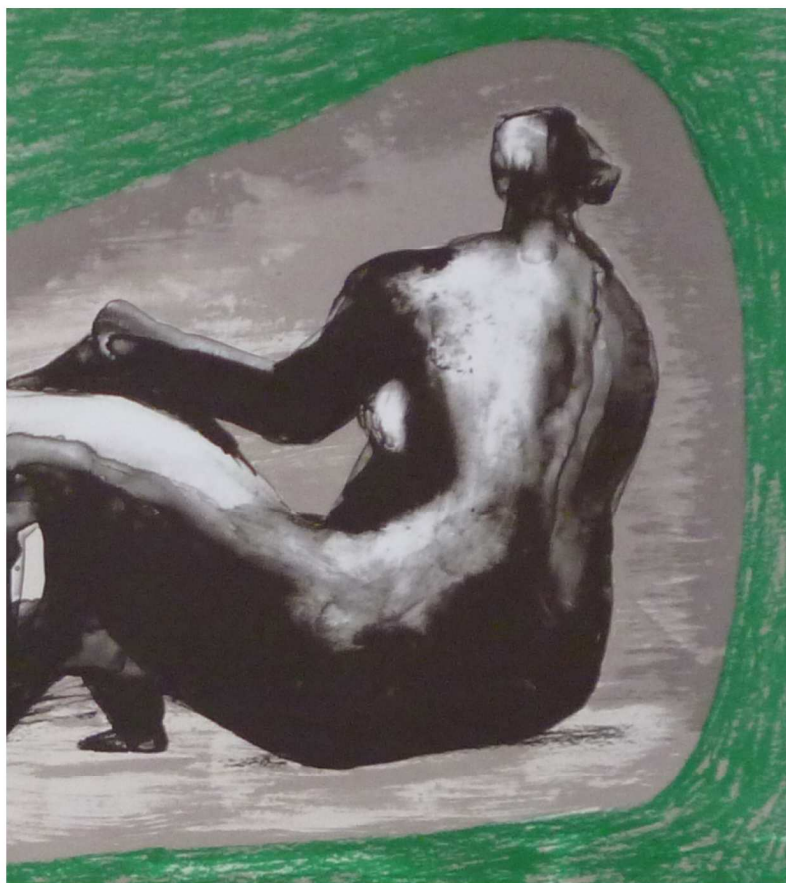
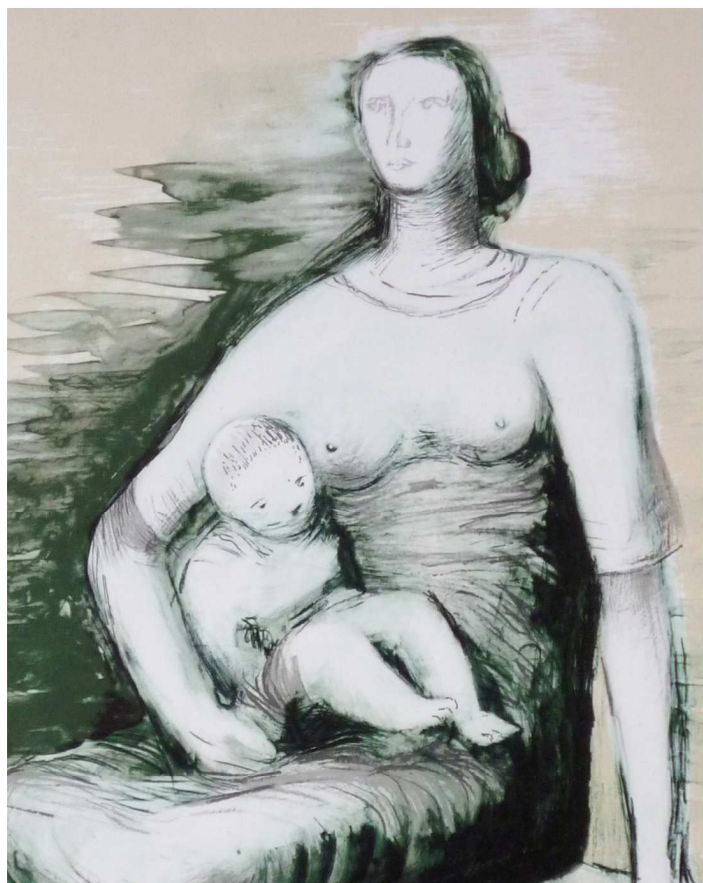


Henry Moore: A Selection of Proofs from Curwen Prints



Exhibition starting from the 15th of October 2011

Gilden's Arts Gallery
87 Heath Street
NW3 6UG London
info@gildensarts.com
www.gildensarts.com

Gilden's Arts is delighted to present its new exhibition of rare proofs by the British Master **Henry Moore**. Our selection is a remarkable illustration of Henry Moore long and fruitful collaboration with Stanley Jones, his lifetime friend and director at the Curwen Studios in the 1960's. Founded in 1863, the Curwen Press, was an innovative printing enterprise where Moore is known to have executed his finest prints.

In 1968, the artist began to publish his own prints in collaboration with Curwen Press. This would not stop until the end of his life as it became increasingly difficult for Moore to face the physical demands of his sculptures. Lithographs proved to be a crucial means for the artist to develop ideas and to respond to his phenomenal success.

The proofs in this exhibition are exceptional by two aspects. First, they were acquired from Curwen Chilford Prints Ltd, where they had been kept since they were made. Secondly, they are the final and complete trials printed before the artist executed his final edition.

All works are for sale with prices ranging from 250£ to 1,000£. Each work is accompanied by the gallery's certificate of authenticity.

We are looking forward to welcoming you in our gallery in Hampstead.

Best regards,

Daniela, Emmanuelle and Ofer





Sisters with Children, 1979

Original Lithograph in colours on TH Saunders paper

56 x 74.5 cm / 22 x 29.3 in

500£



Four Reclining Figures Caves, 1974

Original Lithograph in colours on TH Saunders paper

56.2 x 69.8 cm / 22.1 x 27.4 in

1,000£



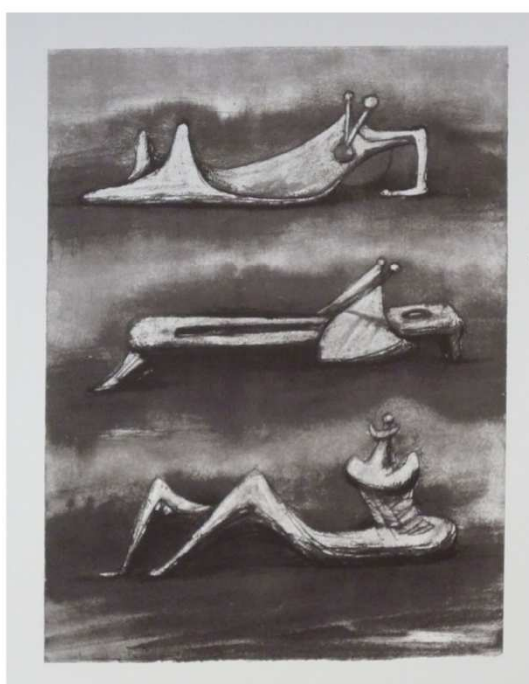


Eight Reclining Figures with Architectural Background, 1963

Original Lithograph in colours on Arches paper

43.2 x 33 cm / 16.6 x 12.9 in

500£



Figures with Smoke Background, 1976

Original Lithograph in colours on TH Saunders paper

50.2 x 40 cm / 19.2 x 15.7 in

450£





Ideas for Metal Sculpture II, 1981

Original Lithograph in colours on TH Saunders paper

44.5 x 44.8 cm / 17.5 x 17.6 in

350£



Ideas for Metal Sculpture III, 1981

Original Lithograph in Olive Brown colours on TH
Saunders paper

46.7 x 42.9 cm / 18.3 x 16.8 in

350£





Rock Head, 1981

Original Lithograph in colours on TH Saunders paper

43 x 40 cm / 16.9 x 15.7 in

250£



Woman's Head, 1981

Original Lithograph in colours on TH Saunders paper

40 x 44.5 cm / 15.7 x 17.5 in

250£





Hands II, 1973

Original Lithograph in three colours on Arches paper
65 x 50 cm / 25.5 x 19.6 in
300£



The Artist's Hand III, 1979

Original Lithograph in Grey colours on TH Saunders
paper
51 x 38 cm / 20 x 14.9 in
300£





Title: Sheep in Landscape, 1974

Technique: Original Lithograph in colours on TH
Saunders paper

Paper Size: 46 x 51.4 cm / 18.1 x 20.2 in

Price: 450£



Title: Two Fat Lambs, 1979

Technique: Original Lithograph in Brown colour on
Auvergne paper

Paper Size: 57 x 71 cm / 22 x 27.9 in

Price: 400£





Seated Figure, 1980

Original Lithograph in colours on TH Saunders paper
 32.1 x 37.2 cm / 12.6 x 14.6 in
500£



Seated Figure V with wikework chair, 1974

Original Lithograph in colours on TH Saunders paper
 22.2 x 16.8 cm / 8.7 x 6.1 in
600£





Adam, 1980

Original Lithograph in colours on TH Saunders paper
53.5 x 62 cm / 20 x 24.4 in

Price: 550£



Nudes Album Cover, 1974

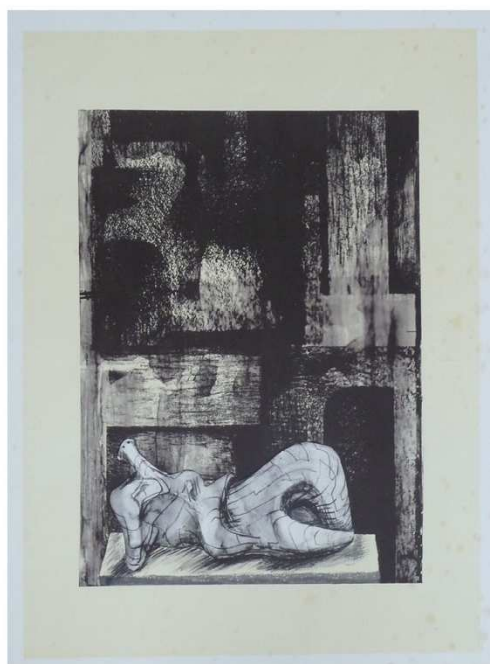
Original Lithograph in Black colour on vellum paper
16 x 33.5 cm / 6.2 x 13.2 in

350£



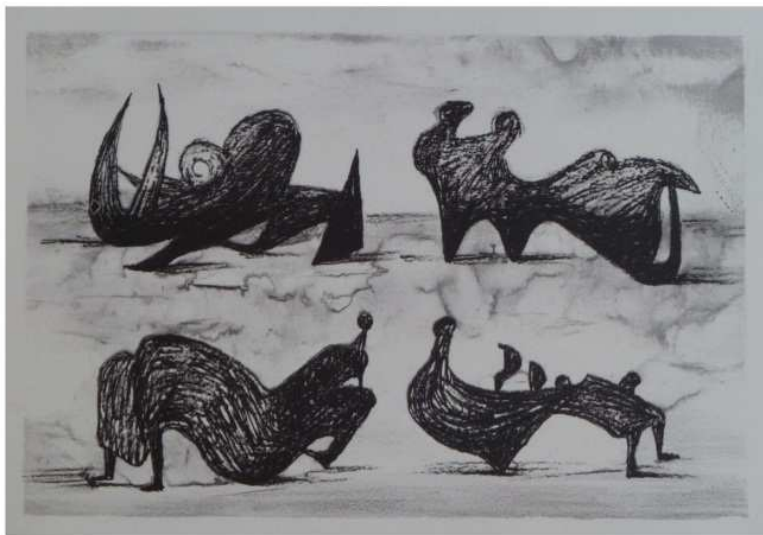


Reclining Figure with Sky Background I
 Original Lithograph in colours on Arches paper
 46 x 45 cm / 18 x 17.9 in
500£



Reclining Figure Architectural Background II, 1977
 Original Lithograph in colours on TH Saunders paper
 66.2 x 53.5 cm / 26 x 21 in
500£





Four Silhouette Figures, 1973

Original Lithograph in black colour on Vellum paper

33 x 45 cm / 12.9 x 17.7 in

450£



Six Reclining Figures

Original Lithograph in colours on TH Saunders paper

45 x 47.2 cm / 17.7 x 18.5 in

500£





Seated Mother and Child, 1979/80
Original Lithograph in colours on TH Saunders paper
51.1 x 36.5 cm / 20 x 14.3 in
550£



Mother and Child on Lap, 1982
Original Lithograph in colours on TH Saunders paper
35.3 x 25.4 cm / 13.8 x 10 in
650£



Moore's post-war aesthetic shows evidences of repetition like in his Mother and Child motif. which he termed his fundamental obsession throughout his career. This subject became a symbolic and recurring image in his work and present a complex vision of the maternal relationship.



Mother and Child with Wave Background I, 1976

Original Lithograph in five colours on Vellum paper

41 x 53.2 cm / 16.1 x 20.9 in

450£





Figures with Sky Background II, 1981
 Original Lithograph in colours on TH Saunders paper
 25.7 x 34.6 cm / 10.1 x 13.6 in
450£



Mother and Child on Dark Background, 1976
 Original Lithograph in Dark Grey colour on TH
 Saunders paper
 59.2 x 50.3 cm / 23.3 x 19.8 in
500£





Female Torso and Sculpture Ideas I, 1979
 Original Lithograph in Dark Green colour on vellum
 paper
 50 x 62 cm / 19.6 x 24.4 in
600£



Reclining Woman, 1975
 Original Lithograph in Grey colour on Arches paper
 50 x 40 cm / 19.6 x 15.7 in
400£





Five Reclining Figures, 1979

Original Lithograph in colours on TH Saunders paper

27.0 x 43.5 cm / 10.9 x 17.1 in

500£



Six Sculpture Ideas, 1979

Original Lithograph in Dark Green colour on vellum paper

52.5 x 64.5 cm / 20.6 x 25 in

600£





Title: Friday Night in Camden Town, 1975
 Technique: Original Lithograph in Brown colour on TH
 Saunders paper
 Paper Size: 55 x 55 cm / 21.6 x 21.6 in
Price: 450£



Title: Seated Figure, 1980
 Technique: Original Lithograph in colours on TH
 Saunders paper
 Paper Size: tbc
Price: 500£

