

GILDEN'S ART GALLERY
PRESENTS

THE AGE OF EARLY MODERN MASTERS

GEORGES BRAQUE, HENRI MATISSE & PABLO PICASSO



GEORGES BRAQUE



Georges Braque 1882-1963
Still life with Teapot and Fruits | *Théière et Fruits*, ca. 1950s

Hand Signed and Numbered Collotype and in Colours on
Arches Wove Paper
60 x 89.5 cm | 23.6 x 35.2 in

GEORGES BRAQUE



Georges Braque 1882-1963
Still Life with Fruits | Nature Morte aux Fruits, ca. 1955

Hand Signed and Numbered Collotype and
Pochoir in Colours on Wove Paper
40.8 x 80.5 cm. | 16.1 x 31.7 in.

GEORGES BRAQUE



Georges Braque 1882-1963
Teapot and Apples | La Théière et les Pommes ca. 1950s

Original Hand Signed and Numbered Lithograph in Colours
on Vidalon Wove Paper
57 x 76.5 cm. | 22.4 x 30.1 in.

GEORGES BRAQUE



Georges Braque 1882-1963
Teapot and Grapes | Théière et Raisin, ca. 1950s

Hand Signed and Numbered Etching and Aquatint in
Colours on Arches Wove Paper
57 x 76 cm. | 22.4 x 29.9 in.

GEORGES BRAQUE



Georges Braque 1882-1963

Apples and Leaves | Poemmes et Feuilles, ca. 1958

Hand Signed and Numbered Collotype and in Colours on
Arches Wove Paper

60 x 89.5 cm. | 23.6 x 35.2 in.

GEORGES BRAQUE



Georges Braque 1882-1963
Foliage in Colour | Feuillage en Couleurs, 1956

Original Hand Signed and Numbered Etching in Colours on
BFK Rives Wove Paper
65.7 x 50.2 cm. | 25.9 x 19.8 in.

GEORGES BRAQUE



Georges Braque 1882-1963
The Duck | Le Canard, 1961

Original Hand Signed and Numbered Lithograph in Colours
with Embossing on Auvergne Wove Paper
51 x 64.5 cm. | 20 x 25.4 in.

GEORGES BRAQUE



Georges Braque 1882-1963
Bird of Passage I Oiseau de Passage, 1961

Original Hand Signed and Numbered Etching in
Colours on BFK Rives Wove Paper
74.5 x 56 cm. | 29.3 x 22 in.

GEORGES BRAQUE



Georges Braque 1882-1963
The Equinox | L' Equinoxe, 1962

Original Hand Signed and Numbered Lithograph in Colours
on Wove Paper
54 x 80.5 cm. | 21.3 x 31.7 in.

GEORGES BRAQUE



Georges Braque 1882-1963
The Raptor | Le Rapace, 1963

Original Hand Signed and Numbered Lithograph in Colours
on Arches Paper
60 x 89.5 cm. | 23.6 x 35.2 in.

GEORGES BRAQUE



Georges Braque 1882-1963
The White Birds | Les Oiseaux Blancs, 1958

Original Hand Signed and Numbered Lithograph in Colours
on Arches Wove Paper
72.1 x 48.5 cm. | 28.4 x 19.1 in.

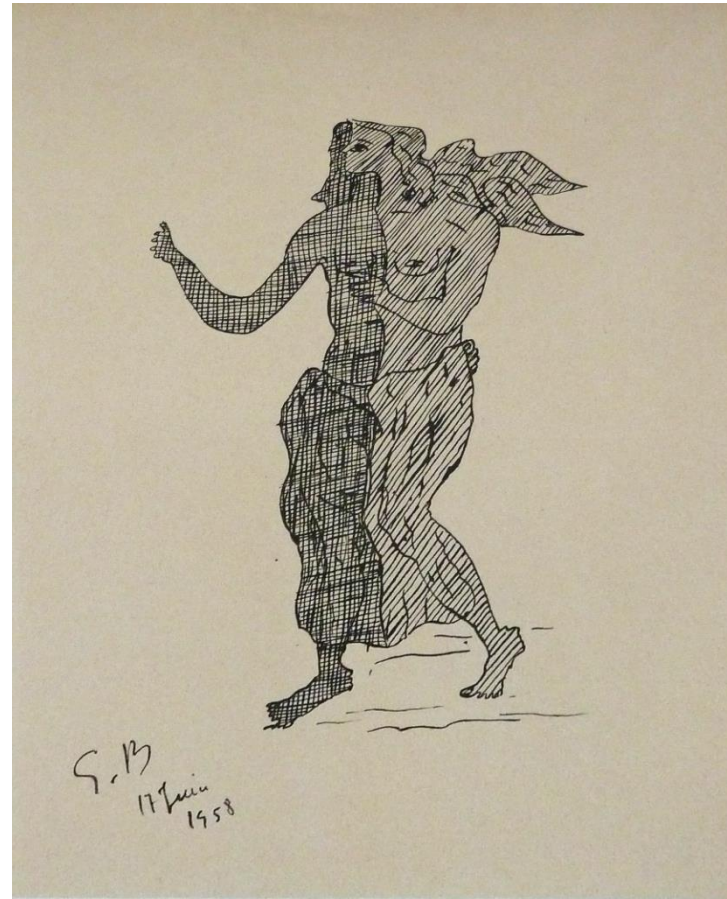
GEORGES BRAQUE



Georges Braque 1882-1963
Multicolour Bird | Oiseau Multicolore, ca 1950

Hand Signed and Numbered Etching and Aquatint on BFK
Rives Wove Paper
40.5 x 62 cm. | 16 x 24.4 in.

GEORGES BRAQUE



Georges Braque 1882-1963
Mythological Figure, 1958

Original Hand Signed and Dated Ink Drawing on Paper
40.5 x 26 cm. | 15 x 10.3 in.

GEORGES BRAQUE



Georges Braque 1882-1963
Grouse, 1960

Original Hand Signed and Numbered Lithograph in Colours
on Arches Wove Paper
47.7 x 65.2 cm. | 18.8 x 25.7 in.

PABLO PICASSO



Pablo Picasso 1881-1973
Head of Woman, In Profile | Tête de femme, de Profil, from:
La Suite des Saltimbanques, 1905

Original Drypoint Etching on Van Gelder Paper
66 x 51 cm. | 26 x 20.1 in.

PABLO PICASSO



Pablo Picasso 1881-1973
The Barbarous Dance (in Front of Salomé and Hérod), from:
Saltimbanques Suite, 1905

Original Drypoint on Van Gelder Zonen Wove Paper
33 x 51 cm. | 26 x 20.1 in.

PABLO PICASSO



Pablo Picasso 1881-1973
Composition with Glass and Fruitbowl ,1965

Hand Signed and Numbered Etching and Collotype in
Colours on Arches Wove Paper
63.7 x 83.5 cm. | 25.1 x 32.9 in.

PABLO PICASSO



Pablo Picasso 1881-1973
Bacchanal | Bacchanale, 1959 | 1963

Hand Signed and Numbered Aquatint in Colours on BFK
Rives Wove Paper
56 x 64.4 cm. | 22 x 25.4 in.

PABLO PICASSO



Pablo Picasso 1881-1973
David and Bathsheba (After Lucas Cranach) II, 1947

Original Hand Signed and Numbered Lithograph on Arches
Wove Paper
66 x 50 cm. | 26 x 19.7 in.

PABLO PICASSO



Pablo Picasso 1881-1973

The Dance of the Fauns | La Danse des Faunes, 1957

Original Hand Signed and Numbered Lithograph on Arches
Wove Paper

50.2 x 66.4 cm. | 19.8 x 26.1 in.

PABLO PICASSO



Pablo Picasso 1881-1973
Dances | Danses, 1954

Original Hand Signed and Hand Numbered Lithograph on
Arches Wove Paper
50 x 65.5 cm. / 19.7 x 25.8 in.

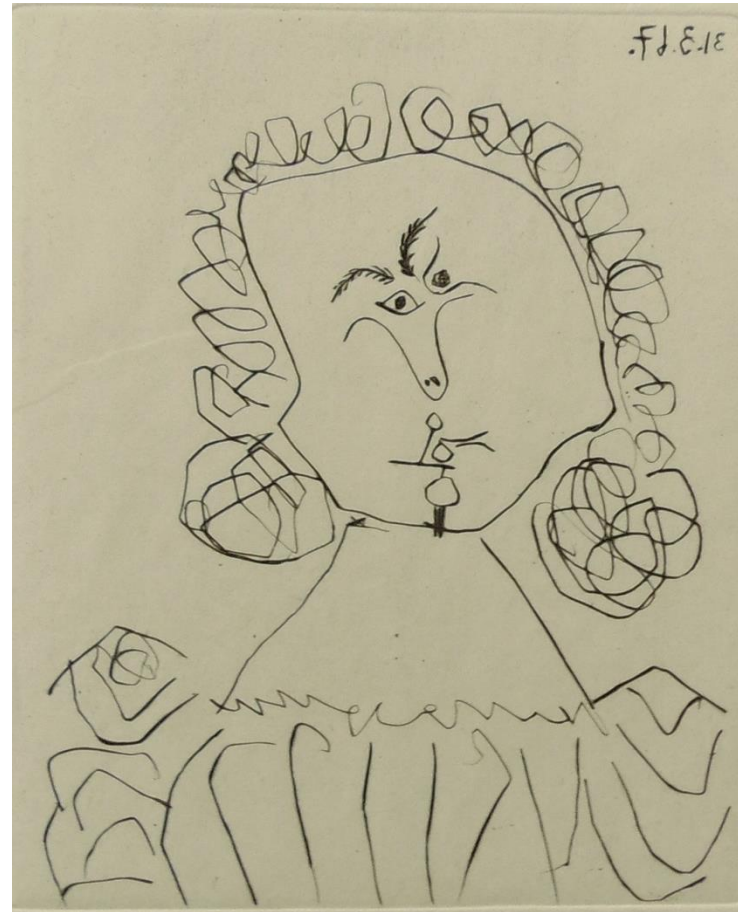
PABLO PICASSO



Pablo Picasso 1881-1973
Greeting Card for Madoura Gallery, 1966

Original Signed and Dated in the Plate and Hand
Numbered Linocut on Wove Paper
21.5 x 14.5 cm. | 8.5 x 5.7 in.

PABLO PICASSO



Pablo Picasso 1881-1973

Double Essay on Picasso | Doble Ensayo sobre Picasso, 1968

Original Hand Signed and Numbered Drypoint on Japan Paper

16 x 13 cm. | 26 x 20.1 in.

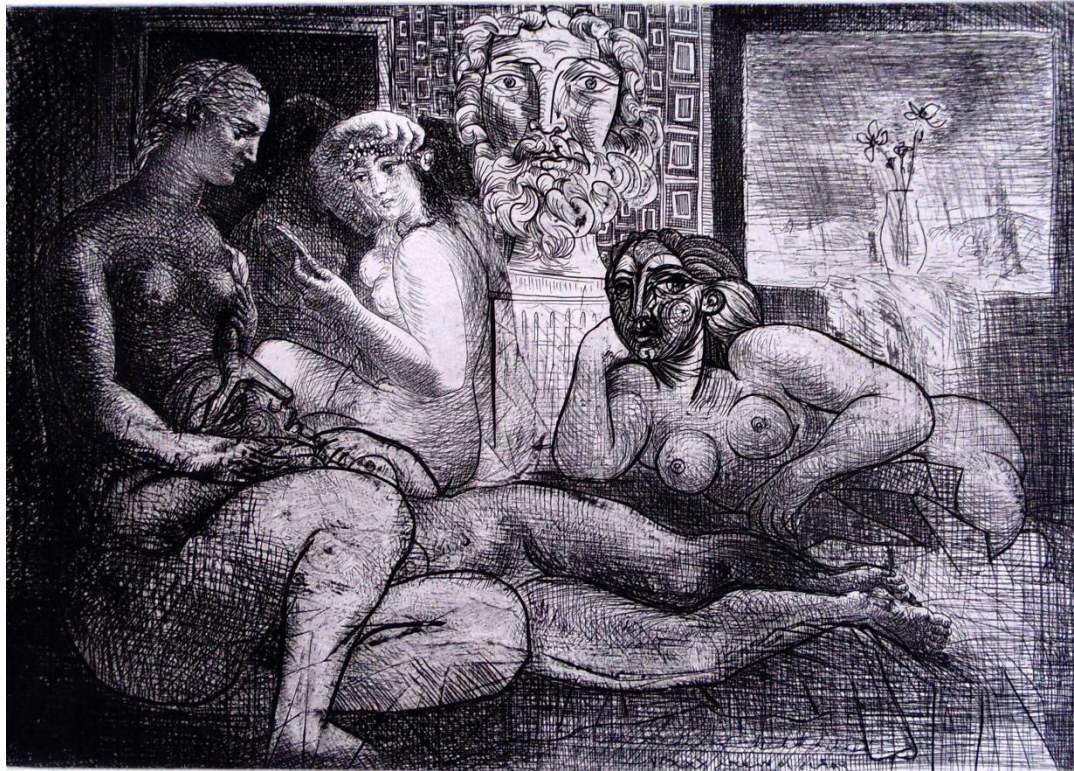
PABLO PICASSO



Pablo Picasso 1881-1973
Smiling Faun | Faune Souriant, 1948

Original Hand Signed and Hand Numbered Lithograph on
Arches Wove Paper
76.4 x 56 cm. | 30 x 22 in.

PABLO PICASSO



Pablo Picasso 1881-1973
Four Nude Women and a Sculpted Head, from: La Suite
Vollard , 1934

Original Hand Signed Etching and Drypoint on Montval Laid
Paper with Vollard Watermark
45.1 x 34.5 cm. | 17.5 x 13.6 in.

PABLO PICASSO



Pablo Picasso 1881-1973

Sculptor and his Model in Front of a Window, from: La Suite Vollard , 1933

Original Hand Signed Etching on Montval Laid Paper with Vollard Watermark

34 x 45 cm. | 13.4 x 17.7 in.

PABLO PICASSO



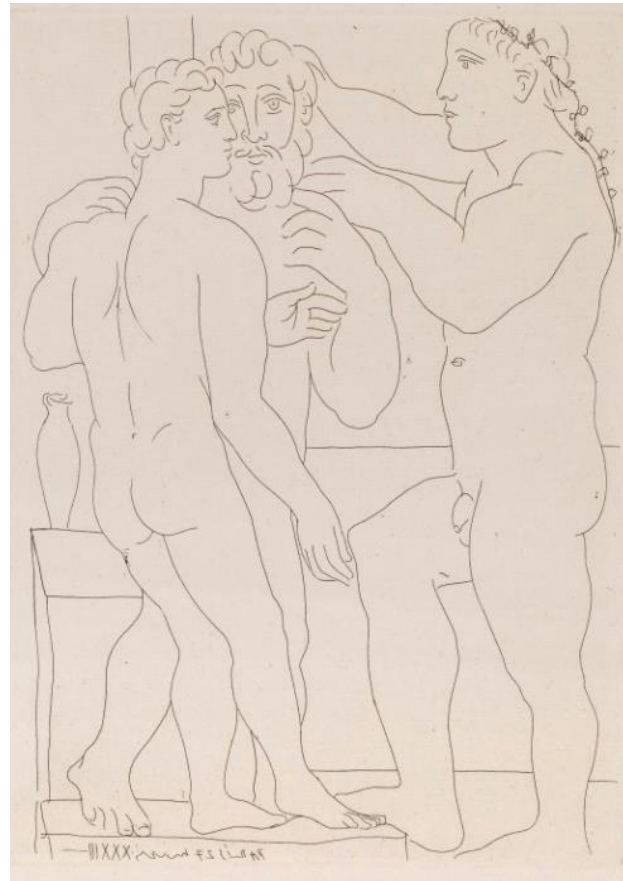
Pablo Picasso 1881-1973

**Rembrandt and Women's Heads, from: La Suite Vollard |
Rembrandt et Têtes de Femmes, 1934**

Original Hand Signed Etching on Montval Laid Paper with
Montval Watermark

38.8 x 50 cm. | 15.3 x 19.7 in.

PABLO PICASSO



Pablo Picasso 1881-1973

**Young Greek Sculptor with Sculpture: Man and Young Man,
from La Suite Vollard, 1933**

Original Hand Signed Etching on Montval Laid Paper with
Picasso Watermark

44.5 x 34 cm. | 17.5 x 13.4 in

PABLO PICASSO



Pablo Picasso 1881-1973

Bather and Putto with Flute, with Men in Swimwear, from: La Suite 347, 1968

Original Hand Signed and Numbered Etching with
Aquatint on Rives Paper
28.6 x 38.4 cm. | 11.2 x 15.1 in.

PABLO PICASSO



Pablo Picasso 1881-1973

**Prostitute and Sailors, from: Suite 347 | Prostituée et marins,
La Suite 347, 1968**

Original Hand Signed and Numbered Etching on
Wove Paper

35 x 28.3 cm. | 13.8 x 11.1 in.

PABLO PICASSO



Pablo Picasso 1881-1973

Young Woman on a Bed, Procuress and Gentleman, from: La Suite 347, 1968

Original Hand Signed and Numbered Drypoint Etching on
Rives Wove Paper
28.3 x 34.8 cm. | 11.2 x 13.7 in.

PABLO PICASSO



Pablo Picasso 1881-1973
Nude Women with Mirror, 1965

Original Hand Signed and Numbered Drypoint and Aquatint
on Auvergne Wove Paper
43 x 51.5 cm. | 17 x 20.3 in.

PABLO PICASSO



Pablo Picasso 1881-1973
Geometric Face, 1956

Original Stamped, Numbered Unglazed White
Earthenware Plate
36 x 5 cm. | 14 x 1.9 in. (diameter)

PABLO PICASSO



Pablo Picasso 1881-1973
Picador, 1952

Original Stamped Black Oxide Glazed White
Earthenware Plate
19.5 cm. | 7.7 in. (diameter)

PABLO PICASSO



Pablo Picasso 1881-1973
Divers | Plongeurs, 1956

Original Stamped Black Oxide Glazed White
Earthenware Plate
18.4 cm. | 7.2 in. (diameter)

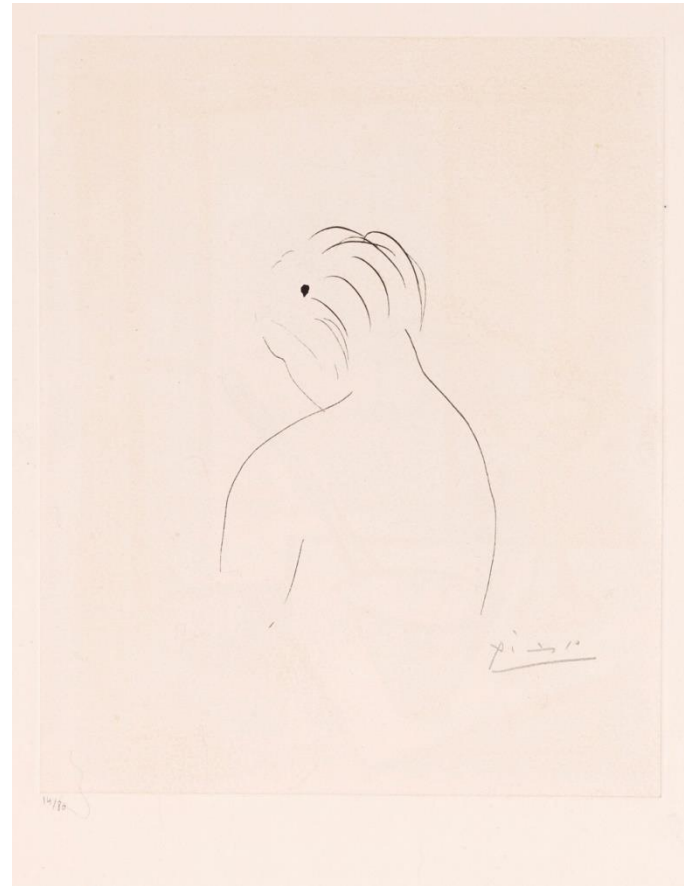
PABLO PICASSO



Pablo Picasso 1881-1973
Picador and Bull, 1953

Original Stamped, Glazed White Earthenware Plate
24.2 cm. | 9.5 in. (diameter)

PABLO PICASSO



Pablo Picasso 1881-1973
Nude Back | Nu de Dos, 1943

Hand Signed and Numbered Etching on Arches
Wove Paper
51 x 37.5 cm. | 20 x 14.8 in.

HENRI MATISSE



Henri Matisse 1869-1954
Odalisque with the Red Coffin, 1926/1952

Hand Signed and Numbered Aquatint in Colours on Arches
Wove Paper
56.5 x 76 cm. / 22.2 x 29.9 in.

HENRI MATISSE



Henri Matisse 1869-1954

Dancer in Half-Leg Pose with Hand to Chin, from: Ten Dancers, 1925-26

Original Hand Signed and Numbered Lithograph on Arches Wove Paper

50.5 x 33 cm. | 19.9 x 13 in.

HENRI MATISSE



Henri Matisse 1869-1954

Dancer Reflected in the Mirror | Danseuse reflétée dans la Glace, 1927

Original Hand Signed and Numbered Lithograph on
Chine Paper

52 x 36.5 cm. | 20.5 x 14.4 in.

HENRI MATISSE



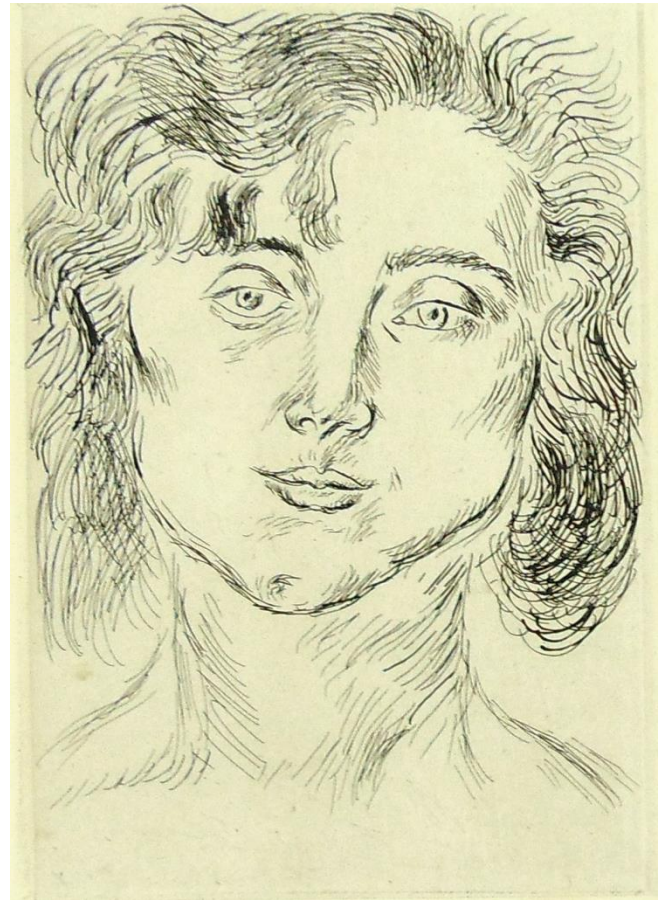
Henri Matisse 1869-1954

Dancer Asleep on the Sofa, from: Ten Dancers, 1925-26

Original Hand Signed and Inscribed Lithograph on
Chine Paper

32.5 x 50 cm. | 12.8 x 19.7 in.

HENRI MATISSE

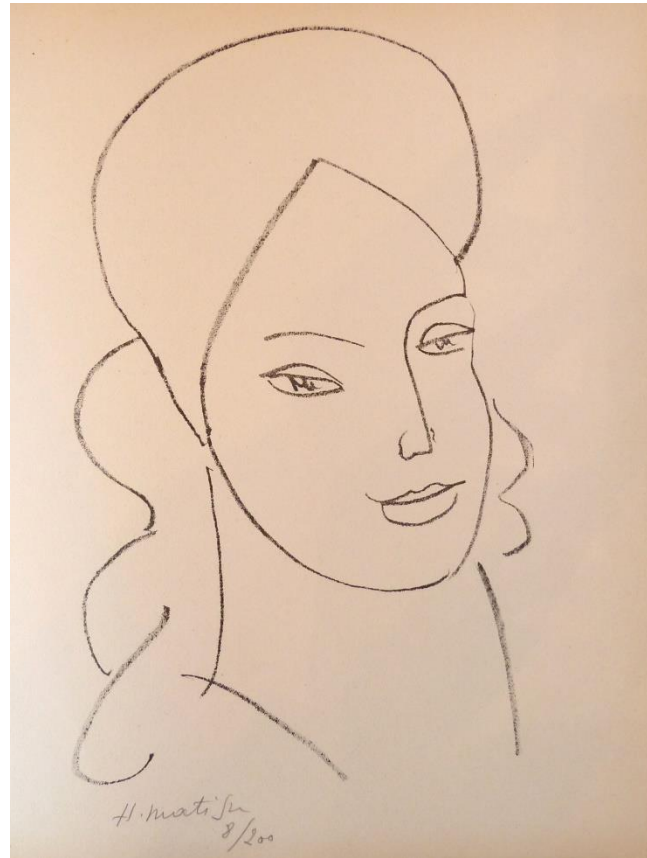


Henri Matisse 1869-1954

**Mlle M.M, Frontispiece, from: Fifty Drawings | Frontispiece,
from: Cinquante Dessins, 1920**

Original Hand Signed Etching on Chine Appliqué to
Hollande Van Gelder Paper
30.3 x 21 cm. | 11.9 x 8.3 in.

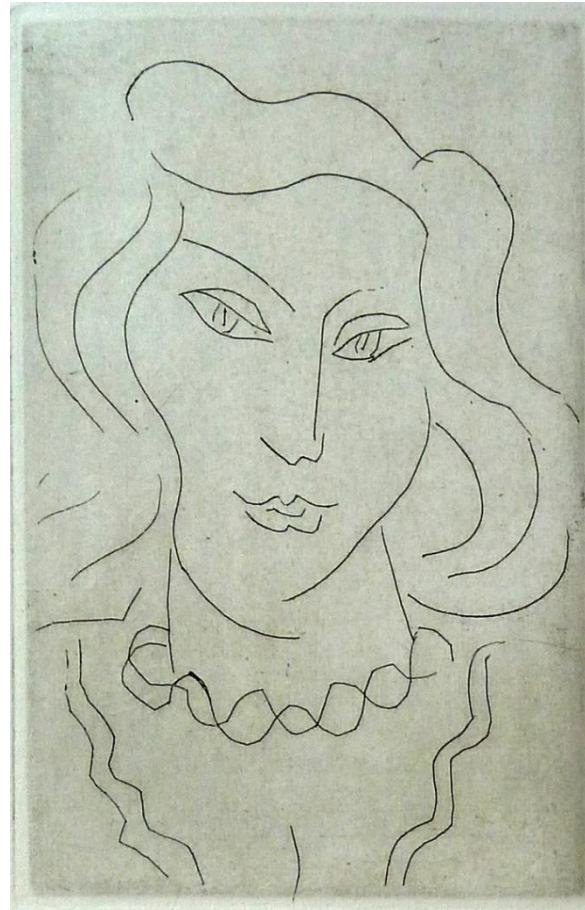
HENRI MATISSE



Henri Matisse 1869-1954
Catherinette, 1946

Original Hand Signed and Numbered Lithograph on
Marais Paper
32.3 x 24.5 cm. | 12.7 x 9.6 in.

HENRI MATISSE



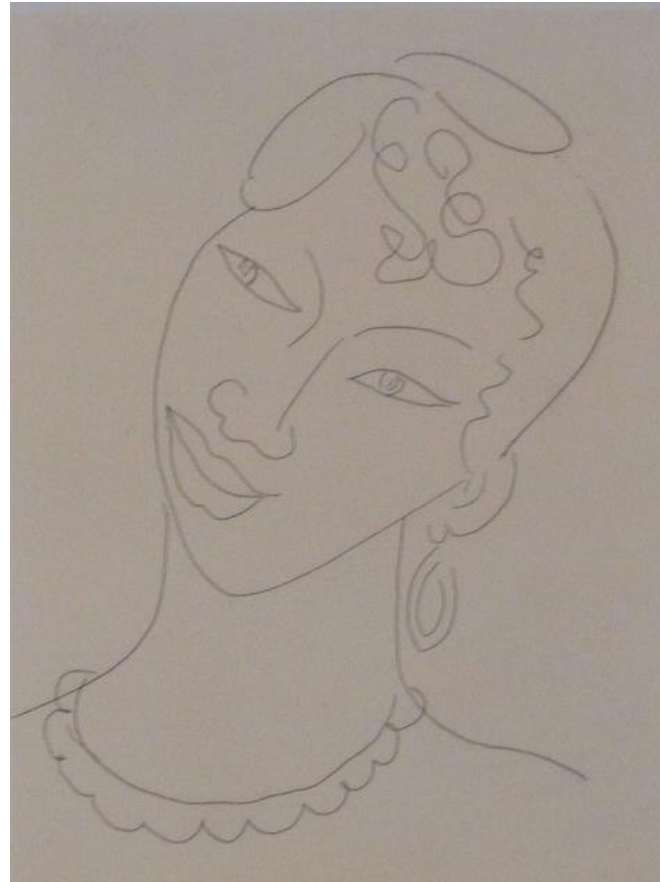
Henri Matisse 1869-1954

Face of a Young Woman with a Twisted Necklace, 1946 | 66

Original Stamped Signed and Numbered Etching on
Wove Paper

38 x 28 cm. | 14.9 x 11 in.

HENRI MATISSE

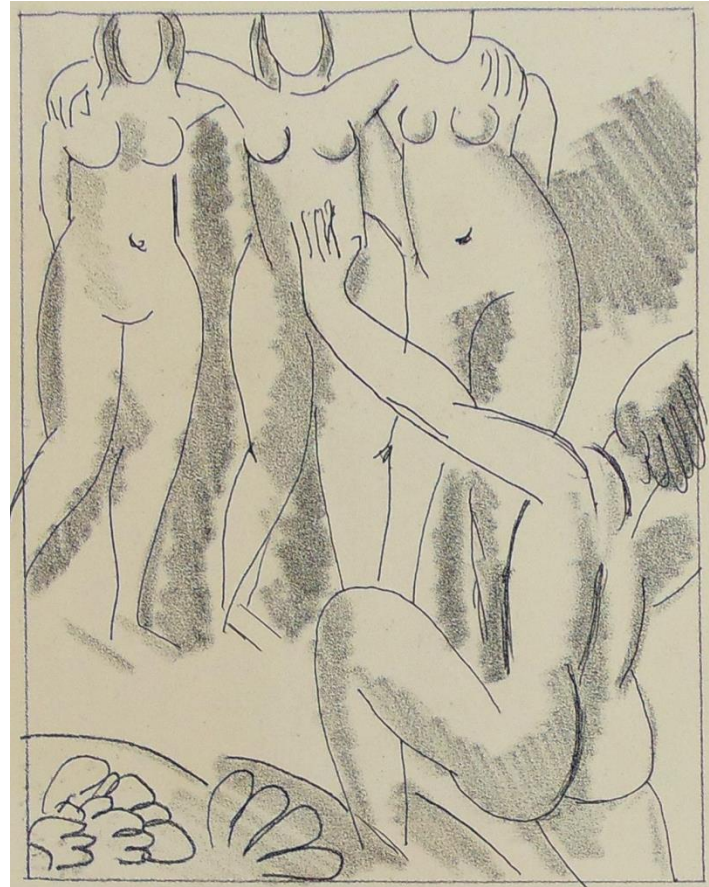


Henri Matisse 1869-1954

Portrait of a Martinican Woman | La Martiniquaise, 1946

Original Hand Signed and Numbered Etching on
Annam Appliqué paper
38.3 x 28 cm. | 15.5 x 11 in.

HENRI MATISSE



Henri Matisse 1869-1954
Nausicaa, from: Ulysses, 1935

Original Hand Signed and Numbered Etching on Arches
Wove Paper
41.2 x 31.2 cm. | 16.2 x 12.3 in.