

2ND DECEMBER - 23RD DECEMBER



THE COPLEYS OF HAMPSTEAD

Gilden's Art Gallery
74 Heath Street
London NW3 1DN

T: +44 (0)20 7435 3340
E: info@gildensarts.com
W: www.gildensarts.com

I N T R O D U C T I O N

Gilden's Art Gallery are delighted, in collaboration with Gordon Cooke, to present for the first time in Hampstead a selection of important etchings and lithographs by John Copley and his wife Ethel Gabain. The selected highlights are direct from the estates of the artists and are returning to Hampstead, their long-time home, for this special exhibition. It is the first time since 1985 that there has been a joint show dedicated to their work and we are privileged to present these original prints a stone's throw away from their marital home of 10 Hampstead Square.

Hampstead was often a source of subjects for them as well as where they lived and worked in their studios for over 30 years. An Autumn Afternoon on Hampstead Heath is one of John Copley's most evocative etchings, and Ethel Gabain often posed her sisters, or any other available model in their home. Ultimately she found her ideal model in Carmen Watson who sat for both artists regularly. Ethel Gabain's sympathetic studies of young women have stimulated a revival of interest in her work in recent years.

We look forward to welcoming you in our gallery to discover more about these talented artists.

Price list is available.

J O H N C O P L E Y

1875 - 1950

A T E A S H O P

1909

Original Handsigned Lithograph in Colours

24.7 x 24.2 cm. | 9.7 x 9.5 in.

Edition: 50

Reference: Wright 28



A DAYLIGHT LAMP

1909

Original Handsigned Lithograph in Colours

30 x 25 cm. | 12 x 9.7 in.

Edition: 50

Reference: Wright 29



OVER THE CITIES

1910

Original Handsigned Lithograph

50 x 24.5 cm. | 19.7 x 9.5 in.

Edition: 30

Reference: Wright 37



COUNSEL AND A STAMP DEALER

1910

Original Handsigned Lithograph

35.5 x 37.5 cm. | 13.7 x 14.7 in.

Edition: 21

Reference: Wright 39



ATHLETES DRESSING

1912

Original Handsigned Lithograph in Colours
22.5 x 22 cm. | 8.7 x 8.5 in.

Edition: 20

Reference: Wright 78



A L A S S I O : S T A R R Y N I G H T

1928

Original Handsigned Lithograph

43 x 31 cm. | 17 x 12.2 in.

Edition: 36

Reference: Wright 214



THE FOYER

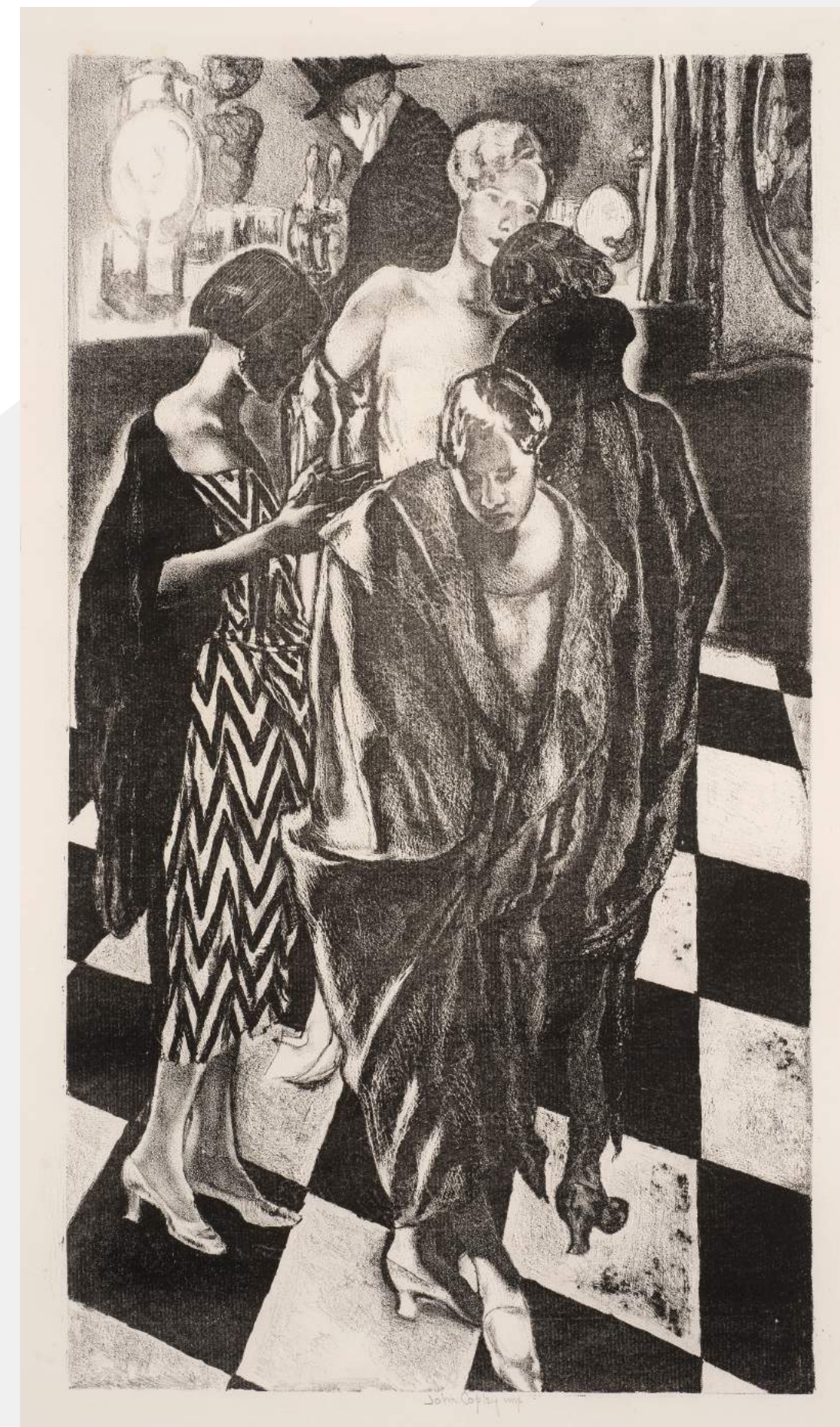
1935

Original Handsigned Lithograph

45 x 25 cm. | 17.7 x 9.8 in.

Edition: 35

Reference: Wright 243



A L A D Y A N D A D A N C E R

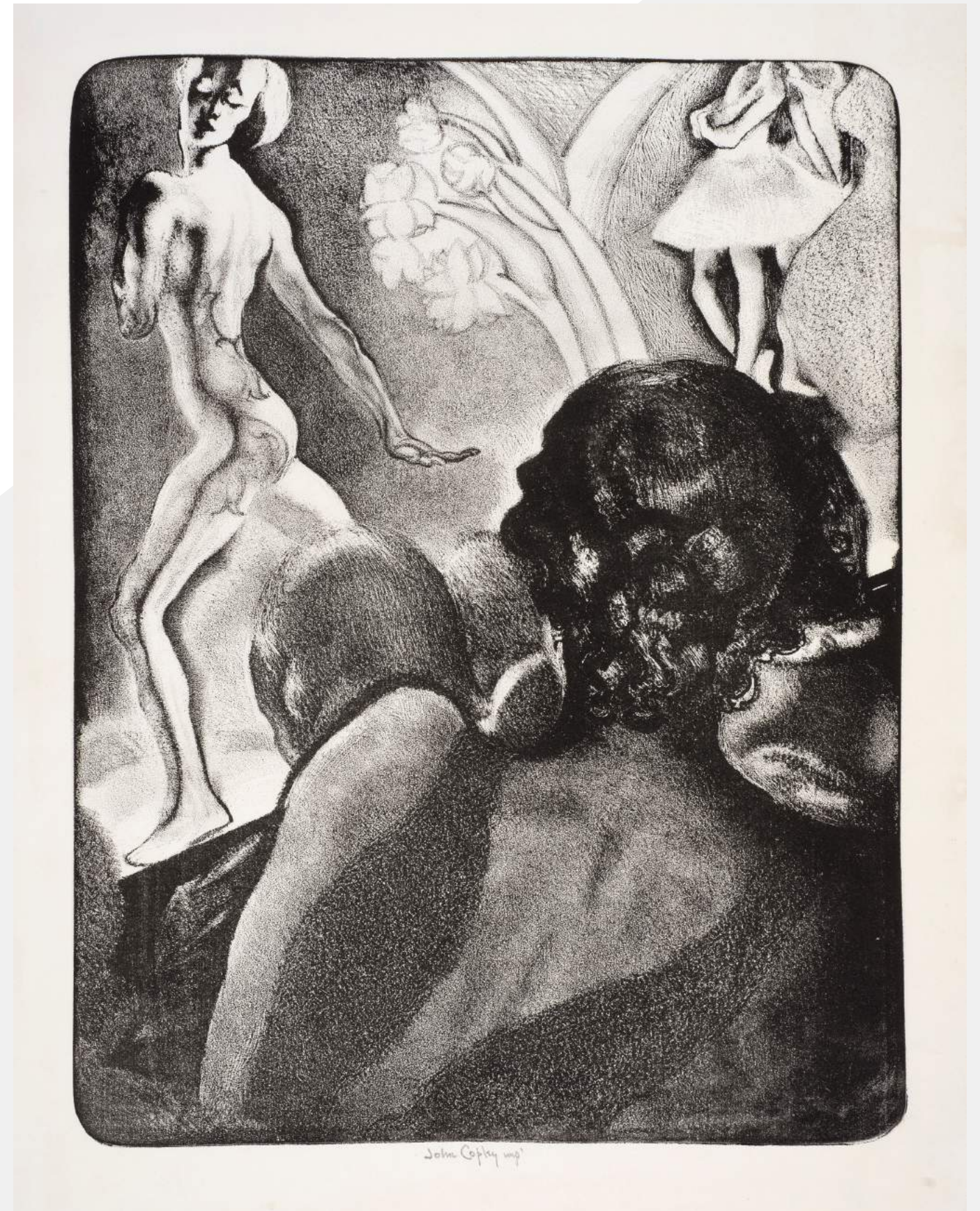
1928

Original Handsigned Lithograph

42.5 x 32.5 cm. | 16.7 x 12.7 in.

Edition: 25

Reference: Wright 251



AN AUTUMN AFTERNOON ON HAMPSTEAD HEATH

1939

Original Handsigned Etching

35.4 x 26.9 cm. | 13.7 x 10.5 in.

Reference: Cooke 85



TRIO

1940

Original Handsigned Etching

27.8 x 31.5 cm. | 10.7 x 12.3 in.

Reference: Cooke 90



L O N D O N S N O W

1940

Original Stamp Signed Etching

35.3 x 27.7 cm. | 14 x 11 in.

Reference: Cooke 95



FOOD

1948

Original Handsigned Etching

28.9 x 35.3 cm. | 11.2 x 14 in.

Reference: Cooke 145



ETHEL GABAIN

1883 - 1950

THE PRINTING PRESS

1911

Original Handsigned Lithograph

26 x 20.2 cm. | 10.2 x 8 in.

Edition: 12

Reference: Wright 89



LA LECTURE

1913

Original Handsigned Lithograph

33 x 26.7 cm. | 13 x 10.5 in.

Edition: 18

Reference: Wright 125



A S U M M E R R O O M

1923

Original Handsigned Lithograph

33.6 x 22.5 cm. | 13.2 x 8.8 in.

Edition: 24

Reference: Wright 258



THE DRAUGHT PLAYERS

1923

Original Handsigned Lithograph

18.2 x 26.2 cm. | 7.1 x 10.2 in.

Edition: 24

Reference: Wright 255



A WINDOW AT OLANTIGH

1923

Original Handsigned Lithograph

34 x 23.8 cm. | 13.3 x 9.3 in.

Edition: 24



CHOIX DE BOTTES

1923

Original Handsigned Lithograph

35 x 26 cm. | 13.2 x 10 in.

Edition: 24

Reference: Wright 254



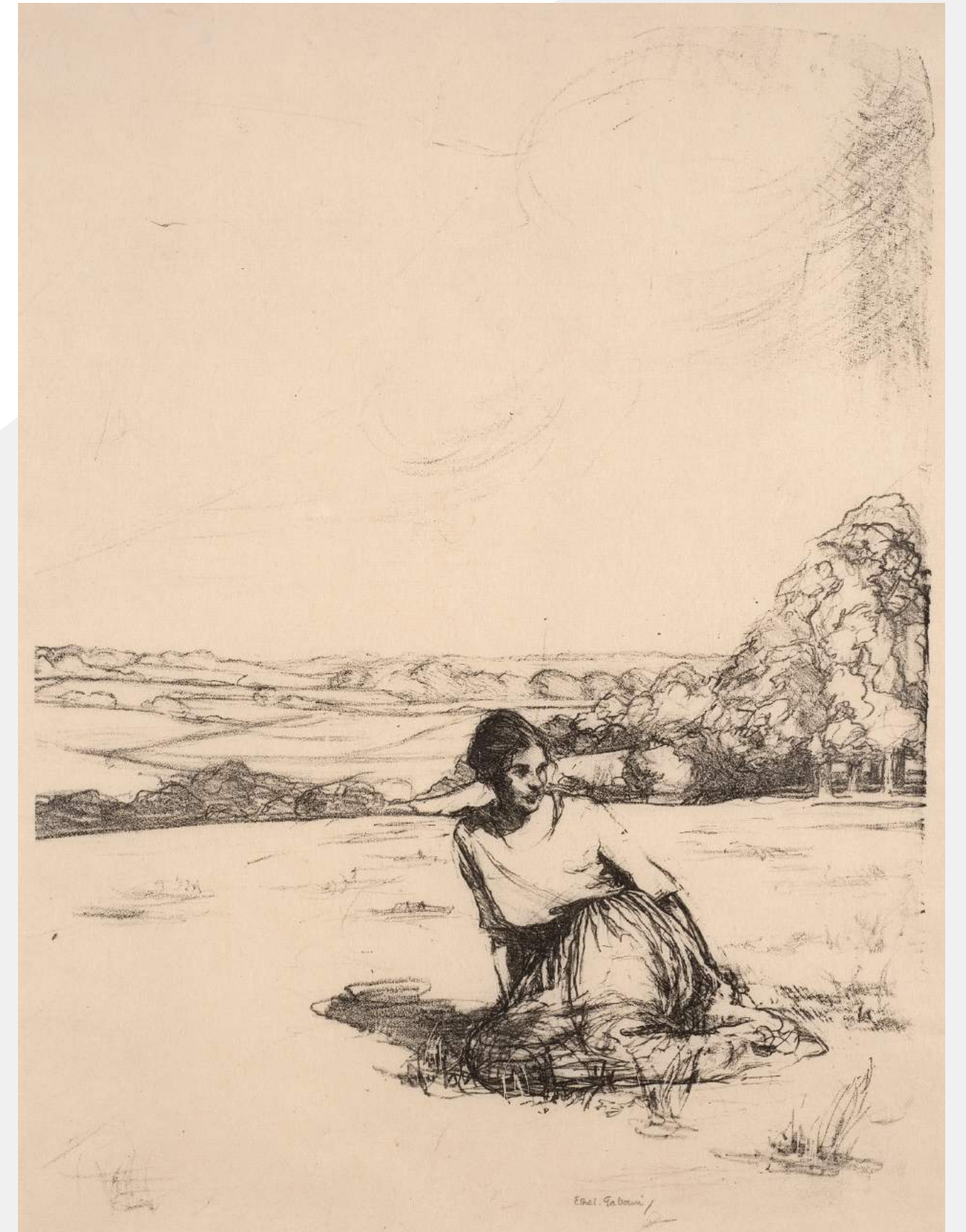
PARKLANDS

1924

Original Handsigned Lithograph

30.5 x 23.3 cm. | 12 x 9.2 in.

Reference: Wright 267



THE BLACK AND WHITE STAIR

1926

Original Handsigned Lithograph

43 x 24.5 cm. | 13.5 x 9.5 in.

Reference: Wright 279



CONTRE JOUR

1932

Original Handsigned Lithograph

34.7 x 24.7 cm. | 13,6 x 9.6 in.

Reference: Wright 307



A FULL SELECTION OF WORKS WILL BE AVAILABLE TO VIEW
IN OUR HAMPSTEAD GALLERY
FROM SUNDAY 2ND DECEMBER UNTIL SUNDAY 23RD
DECEMBER.