



**Gilden's Art Gallery
at**

Art Karlsruhe

**21 - 24 February
Messe Karlsruhe, Messeallee 1, 76287
Rheinstetten.**



SAM FRANCIS 1923-1994
An Other Set-Y (Triptych), from: The
Pasadena Box, 1964

Three Original Hand Signed and Numbered
Lithographs in Colours on Kochi Rice Paper
Mounted on a Folding Screen

39.3 x 172 cm. / 15.5 x 67.7 in.



JOAN MIRÓ 1893-1983
Figure and Stars I, 1979

Original Hand Signed and Numbered Etching
and Aquatint with Embossing and Collage on
Arches Wove Paper

91 x 63 cm. / 35.8 x 24.8 in.



JOAN MIRÓ 1893-1983
The Drunken Horse | Le Cheval Ivre, 1964

Original Hand Signed and Numbered
Lithograph in Colours on Arches Wove Paper

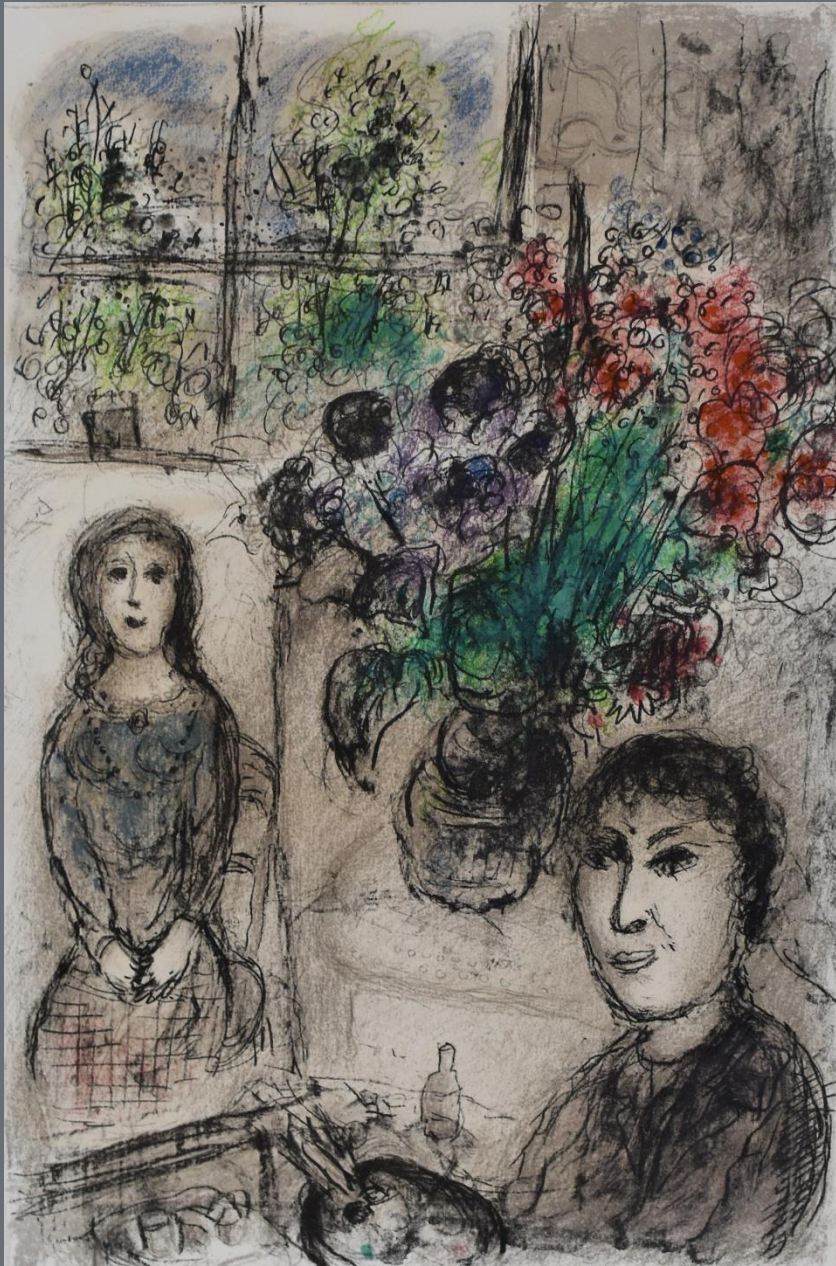
61 x 90 cm. / 24 x 35.4 in



MARC CHAGALL 1887 - 1985
The Song of Songs, 1975

Hand Signed and Numbered Lithograph in
Colours on Arches Wove Paper

71 x 53.5 cm. / 28 x 21 in.



MARC CHAGALL 1887-1985
Easel with Flowers, 1976

Original Hand Signed and Numbered
Lithograph in Colours on Arches Wove Paper

76 x 51 cm. / 30 x 20 in.



MARC CHAGALL 1887-1985
Motherhood, 1954

Hand Signed and Hand Numbered Lithograph
on Arches Wove Paper

59 x 79 cm. / 23.22 x 31.1 in.



GIACOMO BALLA 1871-1958
Forms Sound, 1925/30

Signed Tempera on Card

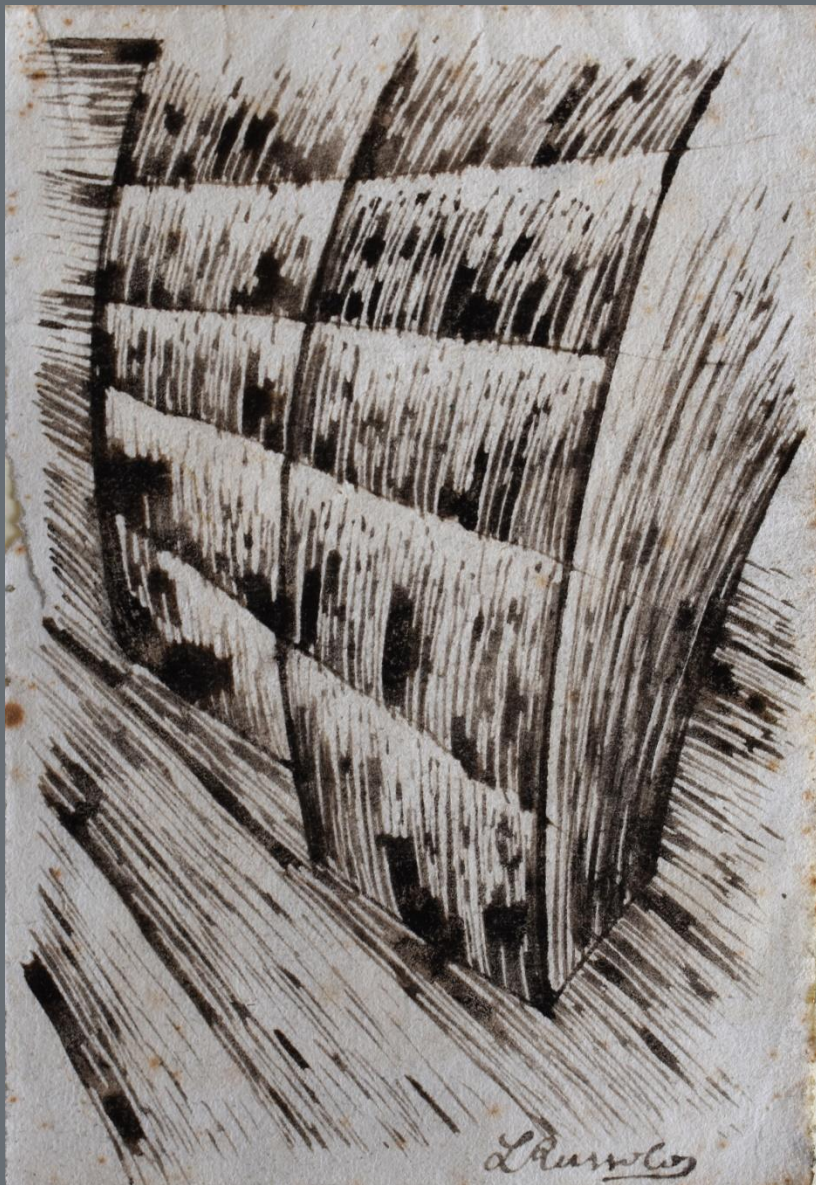
19 x 22.7 cm. / 7.5 x 8.9 in.



GINO SEVERINI 1883-1966
The Violin, 1949

Signed Pastel on Grey Wove Paper

34 x 25.5 cm. / 13.4 x 10 in.



LUIGI RUSSOLO 1885-1947
Untitled, ca. 1909

Signed India Ink Drawing on Wove Paper

16 x 11 cm. / 6.3 x 4.3 in.



MARIO SCHIFANO 1934-1998
The Futurists, 1966

Signed and Dated Watercolour, Spray-paint
and Pencil Drawing on Wove Paper

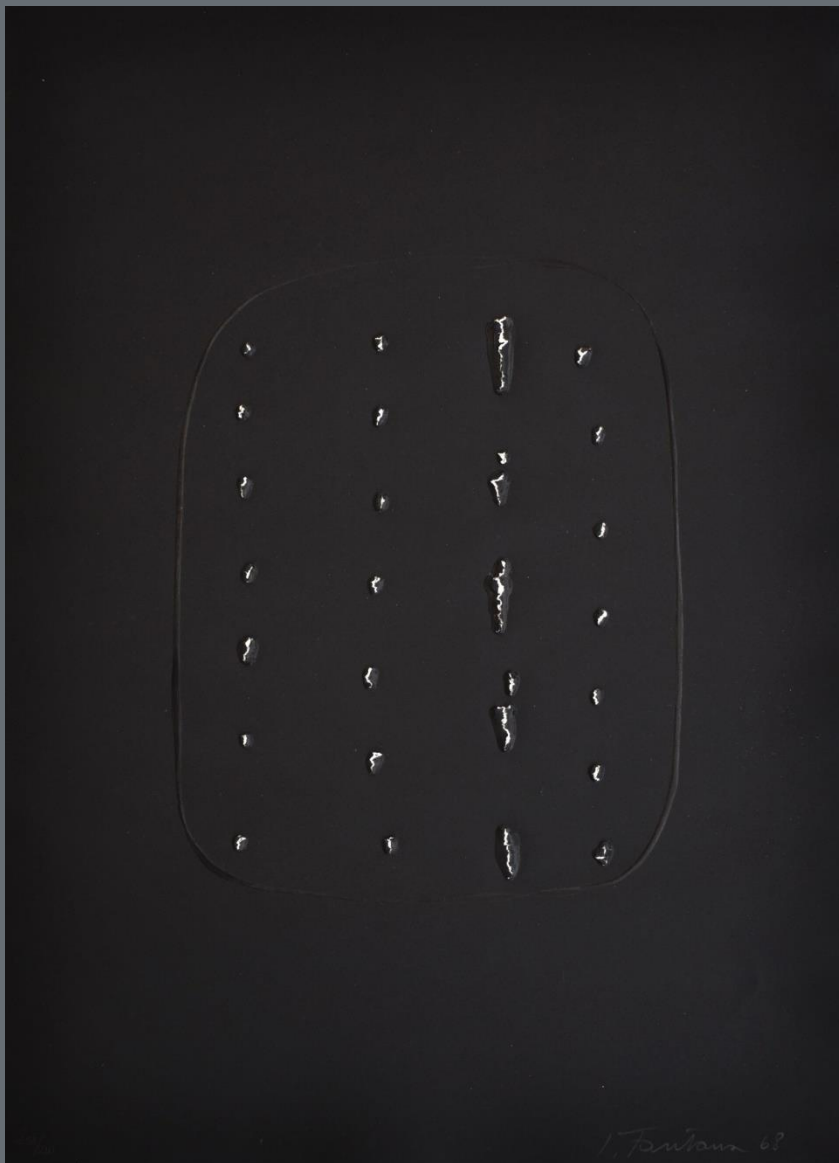
62 x 93.5 cm. / 24.4 x 36.8 in.



MICHELANGELO PISTOLETTO b. 1933
Vanity Mirror, 1962-76

Original Hand Signed and Numbered
Screenprint on Stainless Steel

100 x 70 cm. / 39.4 x 27.6 in.



LUCIO FONTANA 1899-1968
Spacial Concept A, 1968

Original Hand Signed, Numbered and Dated
Etching and Aquatint, Embossing and Punched
Holes on Wove Paper

64.1 x 47.5 cm. / 25 x 18.7 in.



ALBERTO BURRI 1915-1995
Combustion I, 1965

Original Hand Signed and Inscribed Etching
Aquatint and Acetate on Fabriano Rosaspina
Wove Paper

64 x 48 cm. / 25.2 x 18.9 in.



afro. 14

AFRO BASALDELLA 1912-1976
Untitled, 1964

Signed and Dated Goache on Wove Paper

28 x 30.5 cm. / 11 x 12 in.



GIORGIO MORANDI 1890-1964
Still Life with Vases, Bottles etc.
on a Table , ca. 1929

Original Hand Signed and Numbered Etching
on Chine Appliqué and Wove Paper

25 x 35 cm. / 9.8 x 13.8 in.



MARINO MARINI 1901-1980
Jugglers and Horse, 1943

Double-sided Hand Signed and Dated Pencil,
Watercolour and Gouache on Thin Card

49 x 34.5 cm. / 19.3 x 13.6 in.



GIORGIO DE CHIRICO 1888-1978
The Archaeologists, 1969

Original Hand Signed and Numbered
Lithograph in Colours on Wove Paper

70 x 50 cm. / 27.6 x 19.7 in.



CHRISTIAN ROHLFS 1849-1938
Landscape, early 1920s

Hand Signed Water-Tempera and Chalk on
Heavy Japan Paper

31 x 50 cm. / 12.2 x 19.7 in.



WASSILY KANDINSKY 1866-1944
Woodcut for the Ganymede Portfolio, 1924

Original Hand Signed Woodcut on Thin Wove
Paper

24 x 31.6 cm. / 9.4 x 12.4 in.



HERMANN MAX PECHSTEIN 1881-1955
Bathers XI, 1912

Original Hand Signed and Dated Woodcut with
additional Hand-colouring on thin Japan Paper

47.2 x 57.6 cm. / 18.6 x 22.6 in.



ERNST LUDWIG KIRCHNER 1880-1938
Nudes in the Woods, ca. 1933/35

Watercolour and Chalk Drawing on Smooth,
Thin Wove Paper

21 x 30 cm. / 8.3 x 11.8 in.



ERNST LUDWIG KIRCHNER 1880-1938
Pastoral Scene with Cows (In the Larches,
Frauenkirch), ca. 1920

Pen, Brush and India Ink Drawing on Smooth,
Thin Wove Paper

35.7 x 49.4 cm. / 14 x 19.4 in.



MAX BECKMANN 1884-1950
Tall Man, from: Annual Fair, 1921

Original Hand Signed Drypoint on Japan Paper

47 x 32.5 cm. / 18.5 x 12.8 in.



CONRAD FELIXMÜLLER 1897 - 1977
Woman in the Morning - Grooming, 1920

Original Hand Signed and Numbered Etching
on Wove Paper

49 x 34.8 cm. / 19.3 x 13.7 in.



KARL SCHMIDT-ROTTLUFF 1884-1976
Three at the Table, 1914

Original Hand Signed Woodcut on Laid Paper

62 x 51.5 cm. / 24.4 x 20.3 in.



LESSER URY 1861-1931
In the Sunshine near Volluvet, 1884

Hand Signed and Dated Oil on Canvas

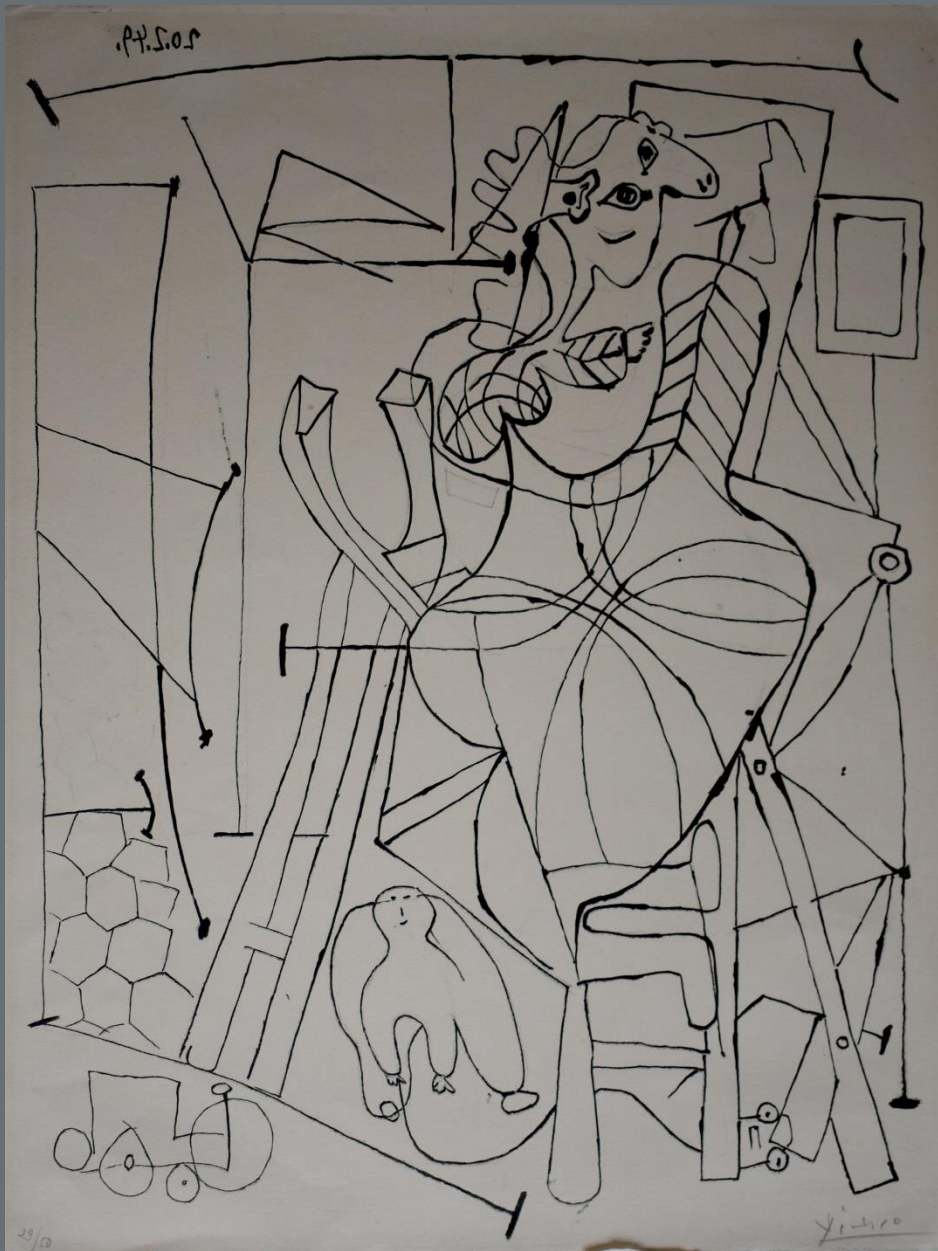
76.5 x 94.3 cm. / 30 x 37 in.



LESSER URY 1861-1931
The Sculptor's Studio, 1883

Hand Signed and Dated Oil on Canvas

92 x 73 cm. / 36.2 x 29 in..



PABLO PICASSO 1881-1973
Artist and Child, 1949

Original Hand Signed and Numbered
Lithograph on Arches Wove Paper

65 x 50 cm. / 25.6 x 19.7 in.



KÄTHE KOLLWITZ 1867-1945
Women with Children, ca. 1909

Hand Signed Chalk Drawing on Laid Ingres
Paper

56.5 x 40.2 cm. / 26.8 x 21.9 in.

Monday – Friday
09:30 – 18:30
Saturday – Sunday
11:00 – 17:00



74 Heath Street
Hampstead
London
NW3 1DN