

GILDEN'S ART GALLERY

LONDON | 2020

The Art of Germany



IFPDA MEMBER

Introduction

Gilden's Art Gallery is delighted to present our digital catalogue showcasing a sample of our current selection of important works by German Masters. This includes drawings, paintings, and original prints from both the German Impressionist and German Expressionist movements. The e-catalogue has been arranged by medium to show the diversity of media employed by the artists.

Further to this e-catalogue, a small selection of these artworks have been arranged in a 3D exhibition available through Kunstmatrix, the link to which has been included in the newsletter alongside this catalogue. The works are also available to view in person at our London gallery until early November 2020 and a small number will be on view at Cologne Fine Art and Design 2020.

WOODCUT HOLZSCHNITT

THE ART OF GERMANY | 2020





Erich Heckel 14

Ore Mountain Landscape |
Erzgebirgslandschaft [Erzgebirge im Schnee], 1914

Original Hand Signed, Dated and Titled Woodcut on
Laid Watermarked Paper

64 x 45.1 cm. / 22.8 x 17.4 in.

Reference: Dube H 285 II

Provenance: Gropper Art Gallery, Cambridge,
Massachusetts, 1972 Massachusetts Academic
Collection.

ERICH HECKEL



By the Nets | Bei den Netzen, 1914

Original Hand Signed Woodcut on Laid Paper

51.2 x 62.4 cm. / 20.2 x 24.6 in.

Reference: Schapire 165.

KARL SCHMIDT-ROTTLUFF



Russian Forest | Russisches Wald, 1918

Original Hand Signed Woodcut on Wove Paper

35.5 x 53.1 cm. / 14 x 20.9 in.

Reference: Schapire H. 230.

KARL SCHMIDT-ROTTLUFF



People in the Forest (Couple in the Forest) |
Menschen im Wald (Paar im Wald) , 1918

Original Hand Signed and Numbered Woodcut in
Colours on Wove Paper

35 x 42 cm. / 13.8 x 16.5 in.
Reference: Söhn 135.a

CONRAD FELIXMÜLLER

ETCHING RADIERUNG

THE ART OF GERMANY | 2020



MAX LIEBERMANN



Mother and Child | Mutter und Kind, 1917

Original Hand Signed Drypoint on JW Zanders Wove Paper

44.5 x 30.5 cm. / 17.5 x 12 in.
Reference: Schiefler 225 III c



6/100

Max Liebermann

Playing Child | Spielendes Kind, 1921

Original Hand Signed and Numbered Etching and
Drypoint on Wove Paper

35 x 25.5 cm. / 13.8 x 10 in.

Reference: Schiefler 333

MAX LIEBERMANN

CONRAD FELIXMÜLLER



Woman in the Morning - Grooming |
Frau in der Morgen Kämmen, 1920

Original Hand Signed and Numbered Etching on
Wove Paper

49 x 34.8 cm. / 19.3 x 13.7 in.

Reference: Söhn 236

CONRAD FELIXMÜLLER



Felixmüller

The Old Collier | Der alte Kohlenarbeiter, 1921

Original Hand Signed Drypoint on Wove Paper

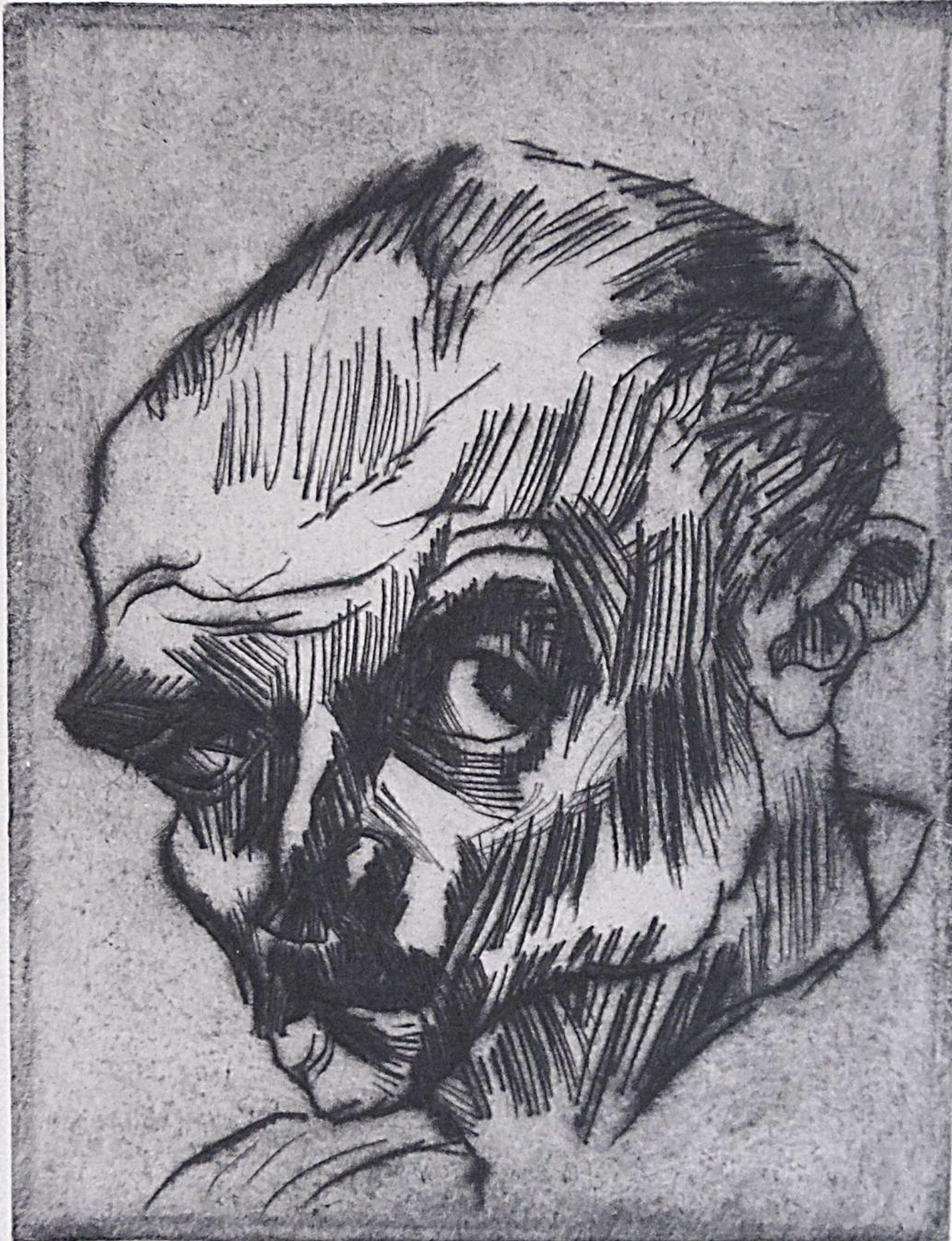
27 x 19.5 cm. / 10.6 x 7.7 in.

Reference: Söhn 257

Provenance: Schmidt & Green, Wuppertal.

Kunstsammlung E.ON Ruhrgas

LUDWIG MEIDNER



Self Portrait no. VIII | Selbstbildnis VIII, 1920

Original Hand Signed Etching and Drypoint on Wove Paper

32 x 24 cm. / 12.6 x 9.4 in.

Reference: Flammann/Hofheim 73

KARL SCHMIDT-- ROTTLUFF



Girl's Head I Mädchenkopf, 1920

Original Hand Signed Etching on Wove Paper

36.6 x 27.9 cm. / 14.4 x 11 in.

Reference: Schapire R. 30

LESSER URY



Streetscape small Bellevuestraße | Straßenbild Klein
Bellevuestraße, 1919

Original Hand Signed Etching and Drypoint on Laid
Paper

28 x 24 cm. / 11 x 9.4 in.
Reference: Rosenbach 54

LESSER URY



Nightly Encounters in Tiergartenstrasse | Nächtliche Begegnung in der Tiergartenstraße, 1919

Original Hand Signed and Numbered Etching and Drypoint on Simili-Japan Paper

36 x 25 cm. / 14.2 x 9.8 in.

Reference: Rosenbach 51

OTTO DIX



14/50

Lili

1922

Lili, Queen of the Sky, from: Circus |
Lili, die Königin der Luft, aus: Zirkus, 1922

Original Hand Signed, Titled and Numbered Etching
and Drypoint on Wove Paper

49.5 x 35 cm. / 19.5 x 13.8 in.

Reference: Karsch 40/II

WASSILY KANDINSKY



Etching for the German Art Community |
Radierung für die Deutsche Kunstgemeinschaft, 1926

Original Hand Signed Drypoint on Wove Paper

Paper size: 43 x 32 cm. / 16.9 x 12.6 in.

Reference: Roethel 190



Conversation | Unterhaltung, 1906

Original Hand Signed, Dated and Titled Etching in
Colour on Heavy Van Gelder Laid Paper

53.7 x 38 cm. / 21.1 x 15 in.

EMIL NOLDE

HERMANN MAX PECHSTEIN



Russian Ballet | Russisches Ballett, 1912

Original Hand Signed, Dated and Numbered Etching
and Aquatint on Wove Paper

45.2 x 34 cm. / 17.8 x 13.4 in.

LITHOGRAPH LITHOGRAPHIE

THE ART OF GERMANY | 2020





Plough Puller and Wife, from: Peasants' War |
Pflugzieher und Weib, auf: Bauernkrieg, 1907/08

Original Hand Signed Lithograph on Brown Laid Paper

46 x 62 cm. / 18.1 x 24.4 in.

Reference: Klipstein 61; Knesebeck 64 II d (II e)

KÄTHE KOLLWITZ

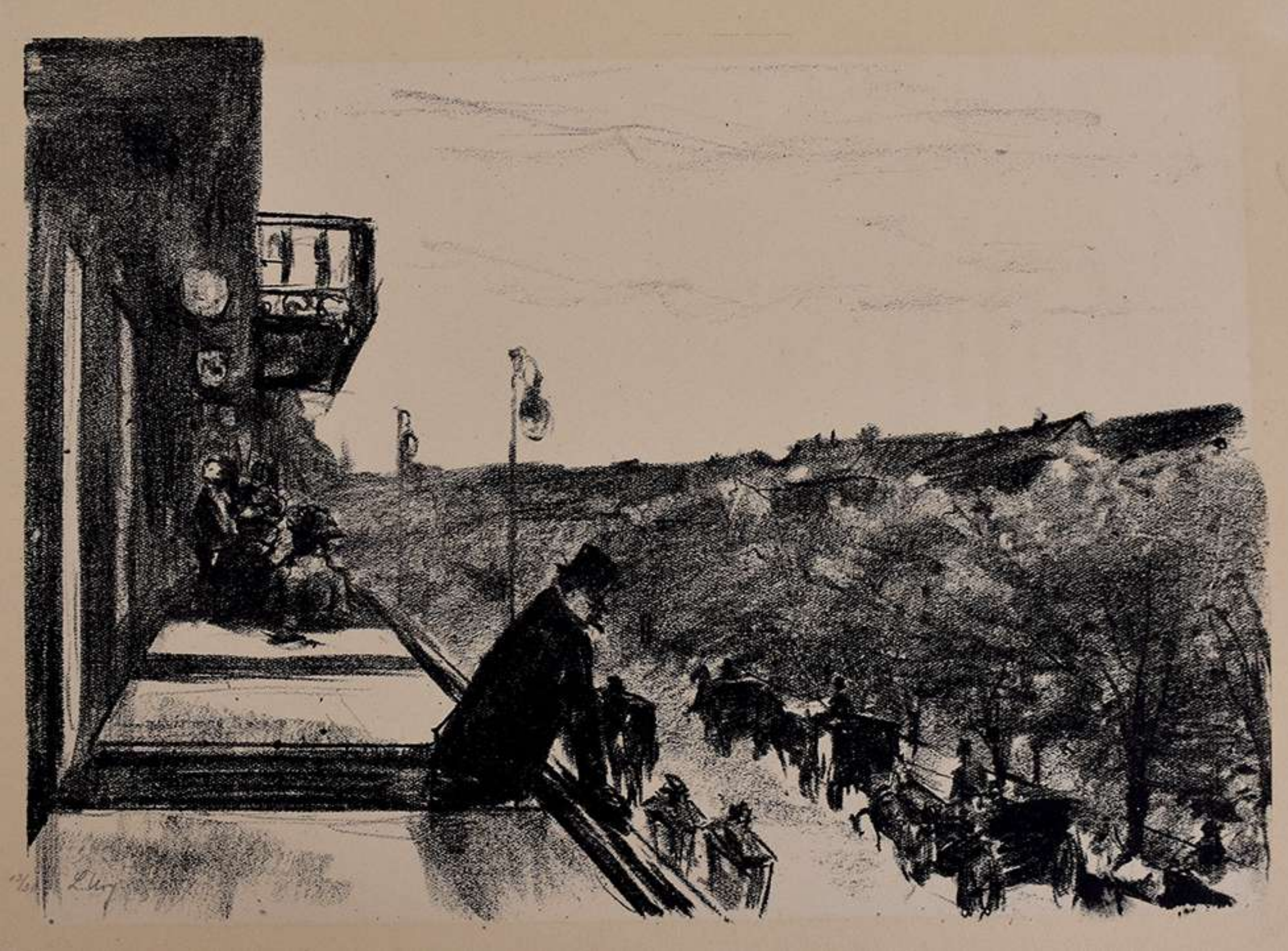
MAX LIEBERMANN

Governess with Child | Wärterin mit Kind, 1919

Original Hand Signed Lithograph on Laid Paper with
partial Fleur-de-lis Crest Watermark

28.3 x 22 cm. / 11.2 x 8.7 in.





Café Terrace, Unter den Linden | Kaffeeterrasse Unter den Linden, 1920

Original Hand Signed and Numbered Lithograph on Wove Paper

22 x 30.3 cm. / 8.6 x 11.9 in.

LESSER URY

OTTO MUELLER



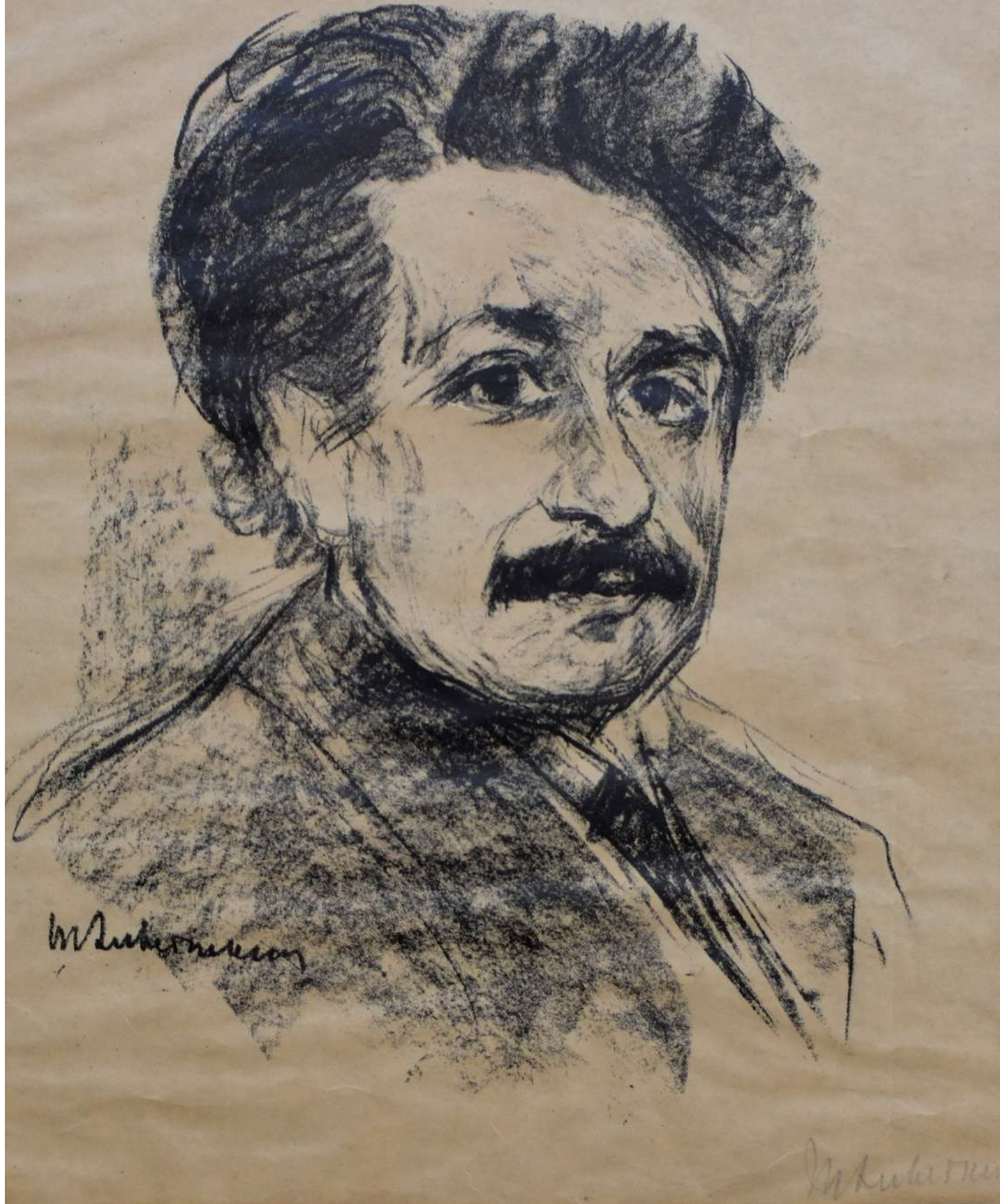
Two Girls - Half Nudes | Zwei Mädchen - Halbnakte, 1920

Original Hand Signed Lithograph on Thin Wove Paper

53 x 43 cm. / 10.9 x 16.9 in.

Reference: Karsch 121.B

MAX LIEBERMANN



Portrait Albert Einstein, 1925

Original Hand Signed Lithograph on Japan Paper

47.5 x 32.5 cm. / 18.7 x 12.8 in.

Reference: Achenbach 105

GEORGE GROSZ



Self-Portrait with Dog in Front of the Easel, from: The
Creators | Selbstbildnis mit Hund vor der Staffelei,
from: Die Schaffenden, 1926

Original Hand Signed Lithograph on Watermarked
Laid Paper

41.2 x 31 cm. / 16.14 x 12.2 in.
Reference: Dückers E 101

Provenance: Isselbacher Gallery, New York, 1983
Private North American Collection

DRAWING ZEICHNUNG

THE ART OF GERMANY | 2020



MAX LIEBERMANN



Sleeping - Double Portrait Martha Liebermann |
Schlafende - Zwei studien von Martha Liebermann, ca.
1895-1900

Stamp Signed Pen and Ink Drawing on Watermarked
Wove Paper

18 x 11.5 cm. / 7 x 4.5 in.

Provenance: The estate of the artist.

Private German Collection.

MAX LIEBERMANN



Double Study of a Woman's Back with outstretched
Arms | Aufblickende weibliche Rückenfigur, die Arme
von sich streckend, ca. 1903-1905

Signed Charcoal Drawing on Wove Paper

47.4 x 31.5 cm. / 18.7 x 12.4 in.

KÄTHE KOLLWITZ



Women with Children | Frauen mit Kindern, ca. 1909

Hand Signed Chalk Drawing on Laid Ingres Paper

56.5 x 40.2 cm. / 26.8 x 21.9 in.

The work is recorded in the catalogue raisonné of Käthe Kollwitz's drawings under the reference 517a.



Reclining Young Man |
Liegender junger Mann, circa 1911

Pencil Drawing on Firm Wove Paper

24.1 x 33.3 cm. / 9.5 x 13.1 in.

ERNST LUDWIG KIRCHNER



OTTO DIX

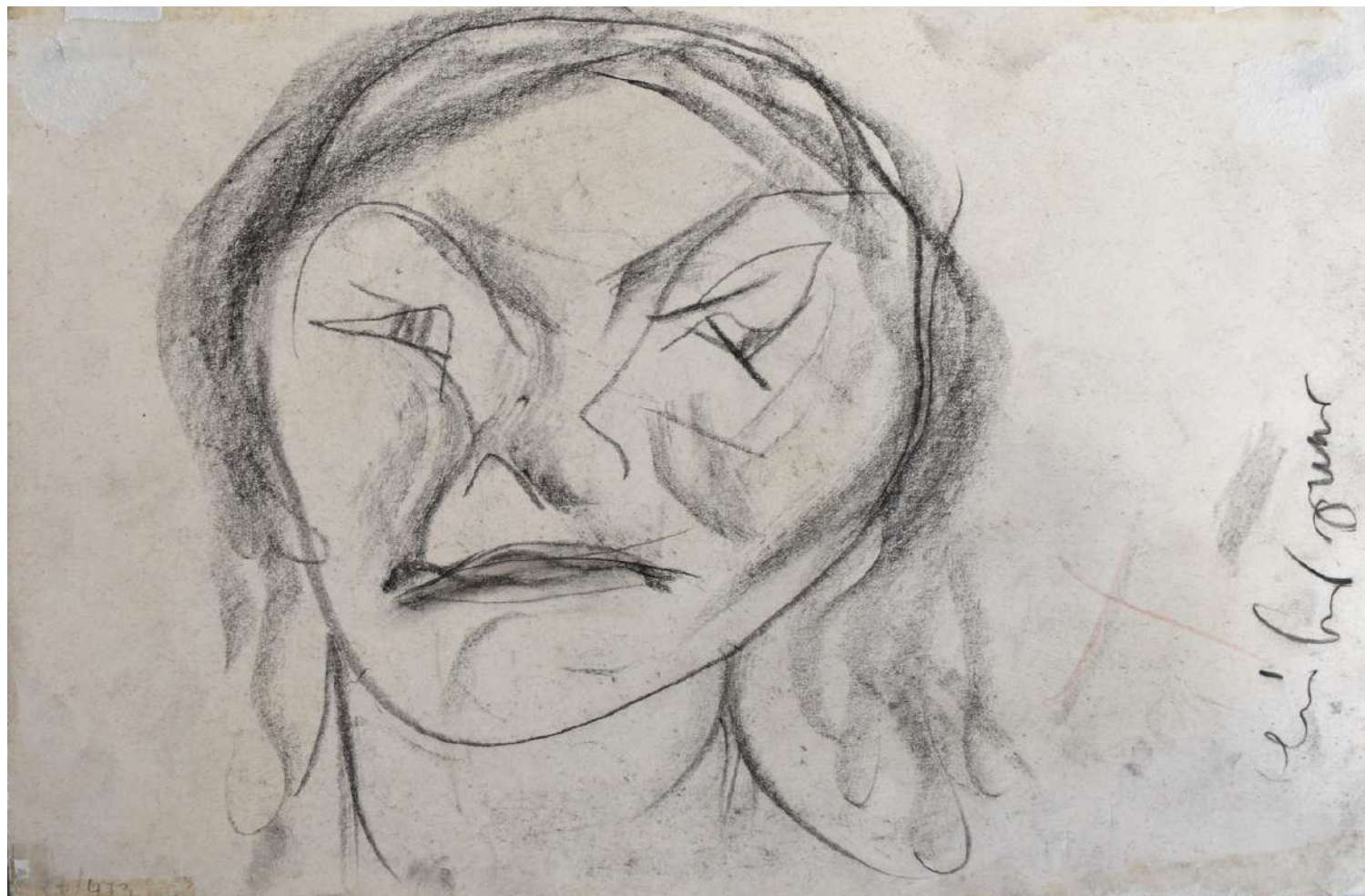
At the Zoological Garden |
Im Zoologischen Garten, ca. 1914

Double-sided Hand Signed Pastel and Pencil on Wove
Paper

18.5 x 28 cm. / 7.3 x 11 in.

Literature:

1. Lorenz, U. (2002) Otto Dix - Das Werkverzeichnis der Zeichnungen und Pastelle. Weimar. Reference: Lorenz FW 5.4.2 (recto) and FW 7.0.12 (verso).
2. Conzelmann, O. (1983) Der Andere Dix. Sein Bild vom Menschen und vom Krieg. Stuttgart, Klett-Cotta, ill. p. 50
3. Pfäffle, S. (1991) Otto Dix. Werkverzeichnis der Aquarelle und Gouachen. Stuttgart, Gerd Hatje, p. 205 under A 1925/16



ERNST LUDWIG KIRCHNER

Standing Woman and Sewing Girl |
Stehende Frau und nähendes Mädchen, 1920

Pencil Drawing on Smooth, Thin Wove Paper

20.7 x 15.9 cm. / 8.1 x 6.3 in.





ERNST LUDWIG KIRCHNER

Reclining Men with Hat and Houses in Landscape |
Liegende Herren mit Hut / Häuser und Landschaft, 1921/25

Signed, Titled and Dated Double-sided Pencil Drawing on
Wove Paper

35.5 x 50.5 cm. / 14 x 19.9 in.

Provenance: Estate of the artist (stamp verso) Martha
Widmer, Winterthur 1954 Herr und Frau Morton D. May, St. Louis
1957 E.A. Silberman Galleries, Inc., New York
William Mazer, 1958. Galerie Arnoldi-Livie, Munich.
The work is registered with the Ernst Ludwig Kirchner Archive,
Wichtrach/Bern.





Gaberndorf, 1932

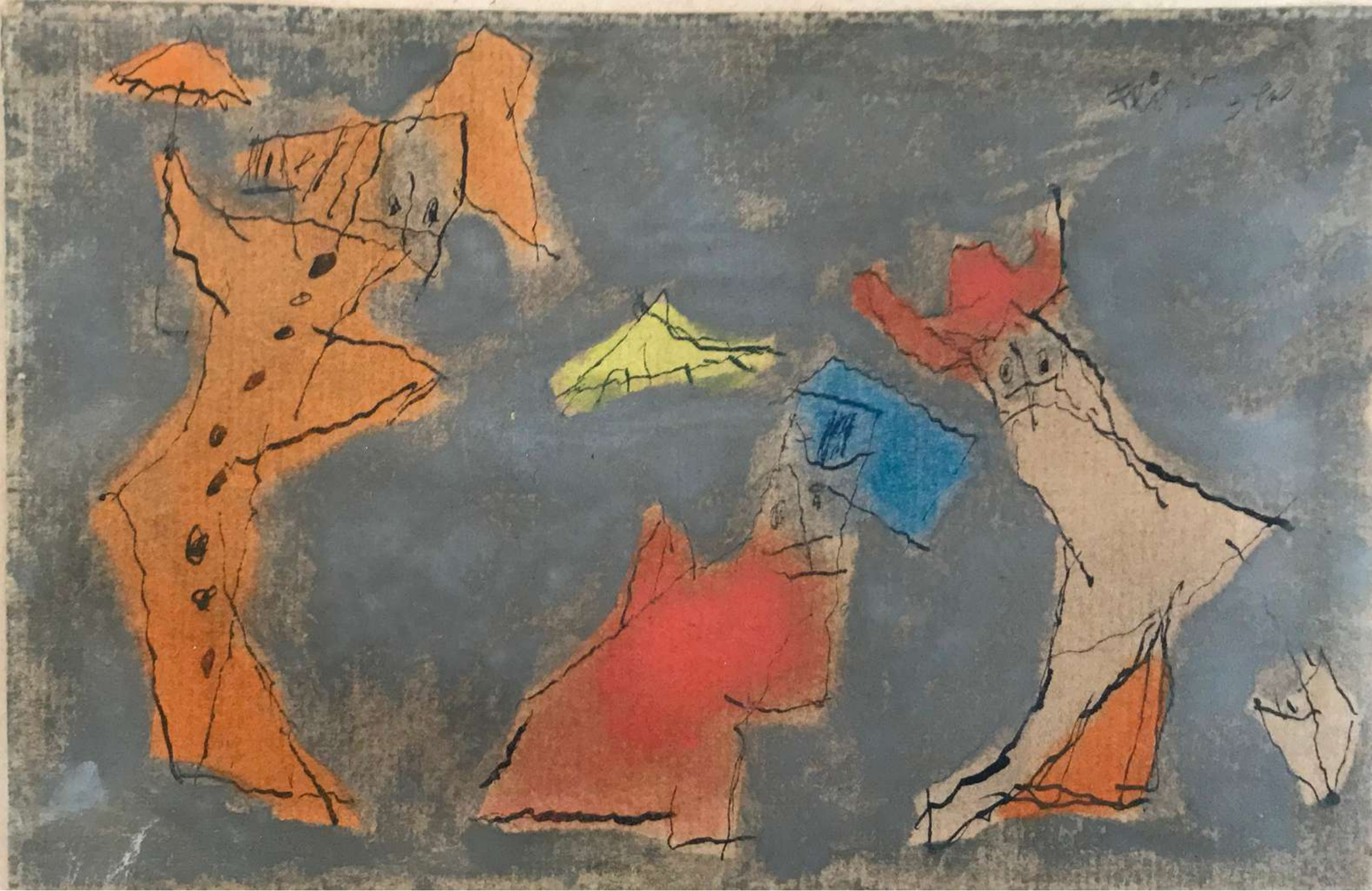
Hand Signed, Dated and Titled Charcoal Drawing on Paper

30.5 x 38.1 cm. / 12 x 15 in.

Provenance: Berggruen & Cie, Paris (acquired by 1974).
Joseph Wolpe Fine Art, Cape Town. Private North
American collection since 1990.

The work is included in the Lyonel Feininger Archives
with the number 1616-08-29-19.

LYONEL FEININGER



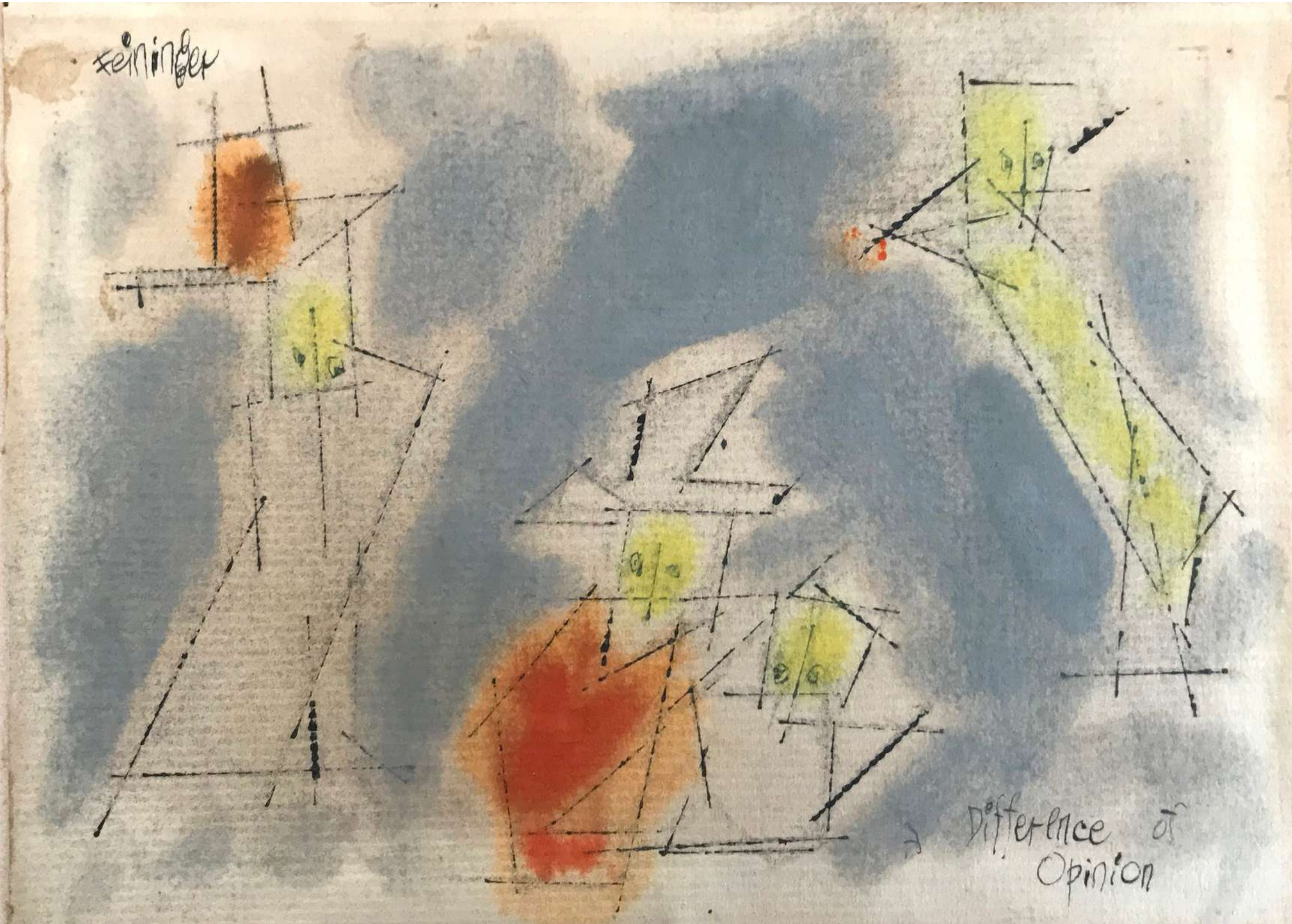
The Three Ghosts, ca. 1950s

Hand Signed Pen Brush and Ink Drawing with
Watercolour on Paper

10.2 x 16 cm. / 4 x 6.3 in.

Provenance: The Collection of Peter Kamnitzer.

LYONEL FEININGER



A Difference of Opinion, ca. 1950s

Hand Signed and Titled Pen Brush and Ink Drawing with Watercolour on Paper

12 x 16.2 cm. / 4.7 x 6.4 in.

Provenance: The Collection of Peter Kamnitzer.

LYONEL FEININGER

PAINTING GEMÄLDE

THE ART OF GERMANY | 2020



LESSER URY



The Sculptor's Studio | Das Bildhauer Atelier, 1883

Signed and Dated Oil on Canvas

92 x 73 cm. / 36.2 x 29 in.

Provenance: Yehuda Elraoi(1911-1992), Natanya, Israel. Yehuda Elroi wasan important Zionist, Author and a board member of the Tel Aviv Museum of Modern Art. Eliezer Levin, Savion, Israel.

OTTO DIX

Forest Clearing | Waldlichtung, 1908

Signed Gouache and Chalk Drawing on Wove Paper

50 x 38 cm. / 19.7 x 15 in.

Provenance: The work will be included into the forthcoming catalogue raisonné under the number Löffler-Beck 1908/07





Reclining Nude on the Beach |
Liegender Akt am Strand, 1911

Signed and Dated Watercolour on Light Brown Board

37 x 52 cm. / 14.6 x 20.5 in.

Provenance: Julian and Leila Sobin, Boston (until 1998)
Sotheby's, London, 8750th auction, German & Austrian
Art from the Julian and Leila Sobin Family Collection,
December 8, 1998, lot no. 265. Private collection,
Rhineland Germany

HERMANN MAX PECHSTEIN

CHRISTIAN ROHILES



In the Cafe | Im Café, 1918

Signed Water-Tempera, Pastel and Chalk on Paper laid on Card

53.7 x 43.8 cm. / 21.1 x 17.2 in.

Provenance: Kunstsalon Hermann Abels, Cologne, acquired 1939.
Private Collection, Rhineland since 1939.

ERNST LUDWIG KIRCHNER

Davos Landscape with Mountain Farmers |
Davoser Landschaft mit Bergbauern, 1919

Signed Watercolour and Pencil and Drawing on Firm Wove Paper

49 x 37 cm. / 19.3 x 14.6 in.

Provenance: Hauswedell und Nolte, Hamburg, 325th auction,
Modern Art, May 24, 1997, lot no. 1039 Private Collection,
Rhineland, Germany.



HERMANN MAX PECHSTEIN



Radiant Sun | Strahlende Sonne, 1918/23

Signed, Dated Watercolour and Chalk on Wove Paper mounted to Card

54.5 x 40.3 cm. / 21.5 x 13.4 in.

Provenance: Galerie Gerda Bassenge, Auktion 20, Teil I, Alte und Neue Kunst, Berlin, 7-11 November 1972, Lot 1412. Private collection, Southern. Germany



Landscape | Landschaft, early 1920s

Signed Water-Tempera and Chalk on Heavy Japan Paper

31 x 50 cm. / 12.2 x 19.7 in.

Provenance: Acquired directly from the artist by the Heinrich Conrad Collection, Essen. Remained in the his family collection until 2018.

CHRISTIAN ROHLFS

MAX LIEBERMANN

Study of a Tree Canopy | Studie einen Baumkrone, 1928

Signed Pastel Drawing on Wove Paper

30 x 23 cm. / 11.8 x 9.1 in.

Provenance:

Private Collection, Berlin Germany

Private Collection, USA since 1947

PrivateCollection, Germany since 2008



Trees on the Hillside | Bäume am Hang

Signed Tempera on Card

48.5 x 64.5 cm. / 19.1 x 25.4 in.

Provenance: Private collection, North Rhine Westphalia Germany. This work is accompanied by a confirmation of authenticity from the Christian Rohlf's Archiv, Osthaus Museum Hagen, dated 25 September 2012. Listed under archive no. CRA 163/17.

CHRISTIAN ROHLFS



Lemons | Zitronen, 1943

Signed Watercolour and Gouache on Wove Paper

31.1 x 46.3 cm. / 12.2 x 18.2 in.

Provenance: Harcourts Gallery, San Francisco, no. XG1651X. Private collection, Southern California.

KARL SCHMIDT-ROTTLUFF

Get in Touch

GILDEN'S ART GALLERY
74 Heath Street, NW3 1DN
London, United Kingdom

+44 (0) 20 7435 3340
www.gildensarts.com
info@gildensarts.com

