

40
40
FOR

40 WORKS FOR 40 YEARS OF GILDEN'S ARTS

GILDEN'S ART GALLERY

PRESENTS

40 FOR 40

40 WORKS FOR 40 YEARS OF GILDEN'S ARTS



OCTOBER - DECEMBER 2021

INTRODUCTION

**WE ARE HONOURED TO CELEBRATE
THE 40TH ANNIVERSARY OF GILDEN'S ARTS IN 2021.**

**ON THIS SPECIAL OCCASION WE HAVE CURATED A SELECTION
OF 40 WORKS FOR 40 YEARS, WHICH REFLECT BOTH
OUR PASSIONS AND THE DIVERSITY OF OUR COLLECTION.**

**GILDEN'S ARTS WAS FOUNDED IN 1981, BY JACOB GILDOR AND
IS A FAMILY RUN BUSINESS WITH HIS SON OFER GILDOR OPENING
GILDEN'S ART GALLERY IN 2006 IN HAMPSTEAD VILLAGE.**

**OVER THE PAST 40 YEARS GILDEN'S HAS BROUGHT A DIVERSE
SELECTION OF ORIGINAL PRINTS AND PAINTINGS TO ART FAIRS
ACROSS ASIA, EUROPE, AND NORTH AMERICA, AS WELL AS
MOUNTING FREQUENT EXHIBITIONS IN OUR
HAMPSTEAD GALLERY.**

**WITH ART FROM MOVEMENTS SUCH AS THE ECOLE DE PARIS,
EASTERN EUROPEAN ART, INTERNATIONAL MODERNISM,
AND AMERICAN POST-WAR BEING BROUGHT TO CLIENTS
ACROSS THE WORLD. IT HAS BEEN SO REWARDING TO ASSIST
OUR CLIENTS BUILD THEIR OWN COLLECTIONS,
OF WHICH THEY ARE PASSIONATE.**

**WE WERE DELIGHTED THAT THIS LONGSTANDING COMMITMENT
TO THE PROMOTION AND COLLECTION OF ORIGINAL PRINTS
WAS RECOGNISED IN 2019, WHEN GILDEN'S ARTS
WAS ACCEPTED TO THE PRESTIGIOUS
INTERNATIONAL FINE PRINT DEALERS ASSOCIATION (IFPDA).**

**FOR THIS PARTICULAR EXHIBITION, 40 FOR 40, JACOB AND OFER
HAVE SHARED SOME OF THEIR OWN INSIGHTS INTO THE PIECES
THAT HAVE INSPIRED OR CAPTIVATED THEM OVER
THESE LAST 40 YEARS, AND ALONG WITH DANIELA, DIAMANTE
AND STEPHEN, HAVE PREPARED SOME
MEMORABLE MOMENTS AND ANECDOTES.**

**WE HOPE YOU WILL ENJOY THIS EXHIBITION AND
WE ARE DELIGHTED TO CELEBRATE THIS IMPORTANT
MILESTONE WITH OUR VALUED CLIENTS.**

“CHAGALL’S EARLY ETCHINGS ALWAYS FASCINATED ME WITH THEIR MODERN,
INVENTIVE SPIRIT COMBINED WITH TRADITIONAL LIFE AND JEWISH VALUES.”

-JACOB

MARC CHAGALL 1887-1985
THE TALMUD TEACHER, FROM: MY LIFE, 1922

ORIGINAL HAND SIGNED AND NUMBERED ETCHING
WITH DRYPOINT ON LAID PAPER

45.1 X 34.9 CM. / 17.7 X 13.7 IN.
REFERENCE: KORNFELD 9



MARC CHAGALL 1887-1985
CHLOE IS CARRIED OFF BY THE METHYMNEANS, FROM:
DAPHNIS AND CHLOE, 1961

ORIGINAL HAND SIGNED AND NUMBERED LITHOGRAPH IN
COLOURS ON ARCHES WOVE PAPER

53.6 X 75.5 CM. / 21.1 X 29.7 IN.
REFERENCE: MOURLOT 327; CRAMER 46



MARC CHAGALL 1887-1985
LOVERS WITH BOUQUET, CA. 1955

SIGNED OIL PAINTING ON BOARD

14 X 10 CM. / 5.5 X 3.9 IN.

PROVENANCE: THIS PAINTING IS ACCOMPANIED BY THE CERTIFICATE
OF AUTHENTICITY FROM THE CHAGALL COMMITTEE,
DATED 10TH MARCH 1993.



"THE BASTILLE, A HISTORICAL MONUMENT FOR THE FREE SPIRIT OF MANKIND,
IS LIKE A SHABBAT CANDLE.

AROUND IT: A DREAM OF COLD AND WARM WAVES OF COLOURS, LOVERS,
STRANGE ANIMALS, AND UP-SIDE DOWN BOUQUET OF FLOWERS
REFLECTS AN UP-SIDE DOWN WORLD.

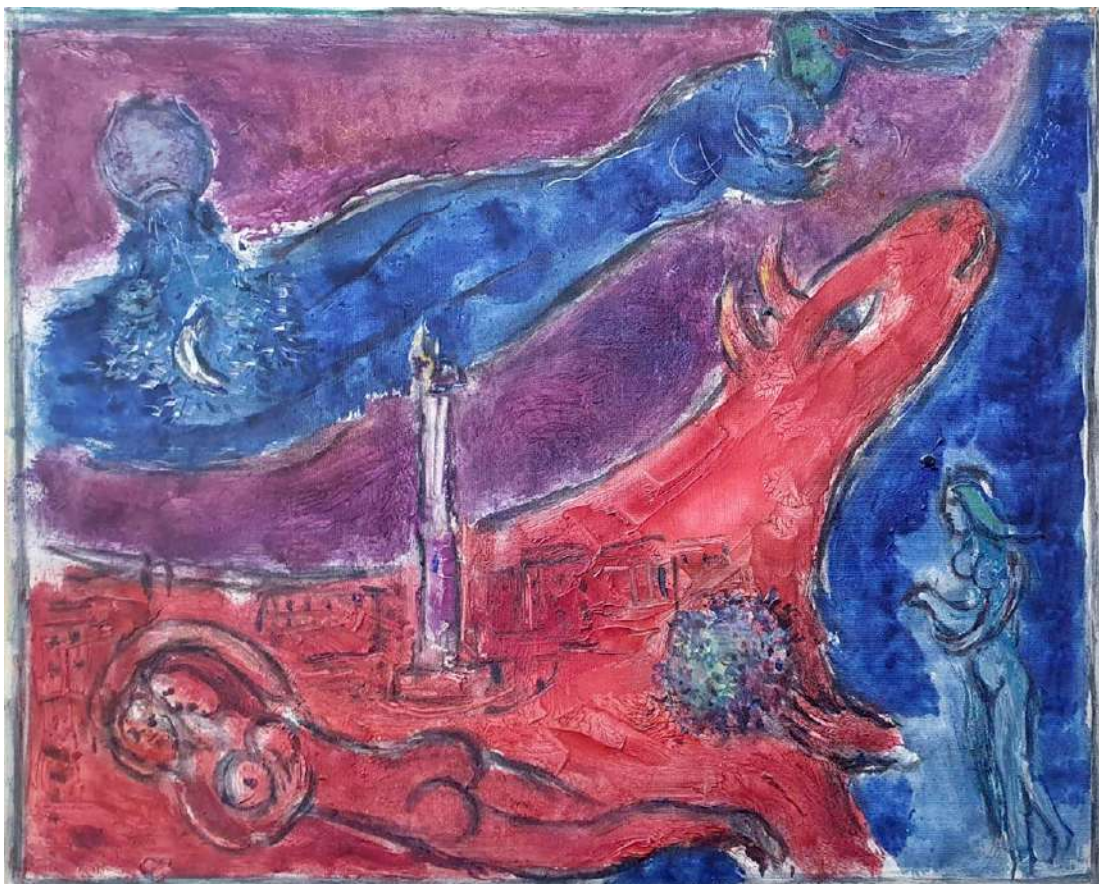
- JACOB

MARC CHAGALL 1887-1985
SKETCH FOR THE BASTILLE, 1954

SIGNED AND DATED OIL PAINTING ON LINEN MOUNTED TO PANEL

27 X 34.9 CM. / 10.6 X 13.7 IN.

PROVENANCE: THIS PAINTING IS ACCOMPANIED BY THE CERTIFICATE OF AUTHENTICITY
FROM THE CHAGALL COMMITTEE FROM 8TH OCTOBER 1999.



"BRAQUE HAS ALWAYS BEEN SPECIAL TO ME,
AS MY FIRST EVER SERIOUS PURCHASE OF A MODERN MASTER PRINT
WAS BRAQUE'S OISEAU SUR FOND CARMINE.
I WAS 23 YEARS OLD."

- OFER

GEORGES BRAQUE 1882-1963
PINK BIRDS FROM: PAINTED WORDS, 1962

ORIGINAL HAND SIGNED AND NUMBERED ETCHING
WITH AQUATINT ON AUVERGNE WOVE PAPER

38 x 28.3 CM. / 14.9 x 11.1 IN.
REFERENCE: VALLIER 183.



GEORGES BRAQUE 1882-1963
TEAPOT AND GRAPES, CA. 1950S

HAND SIGNED AND NUMBERED ETCHING AND AQUATINT IN
COLOURS ON ARCHES WOVE PAPER

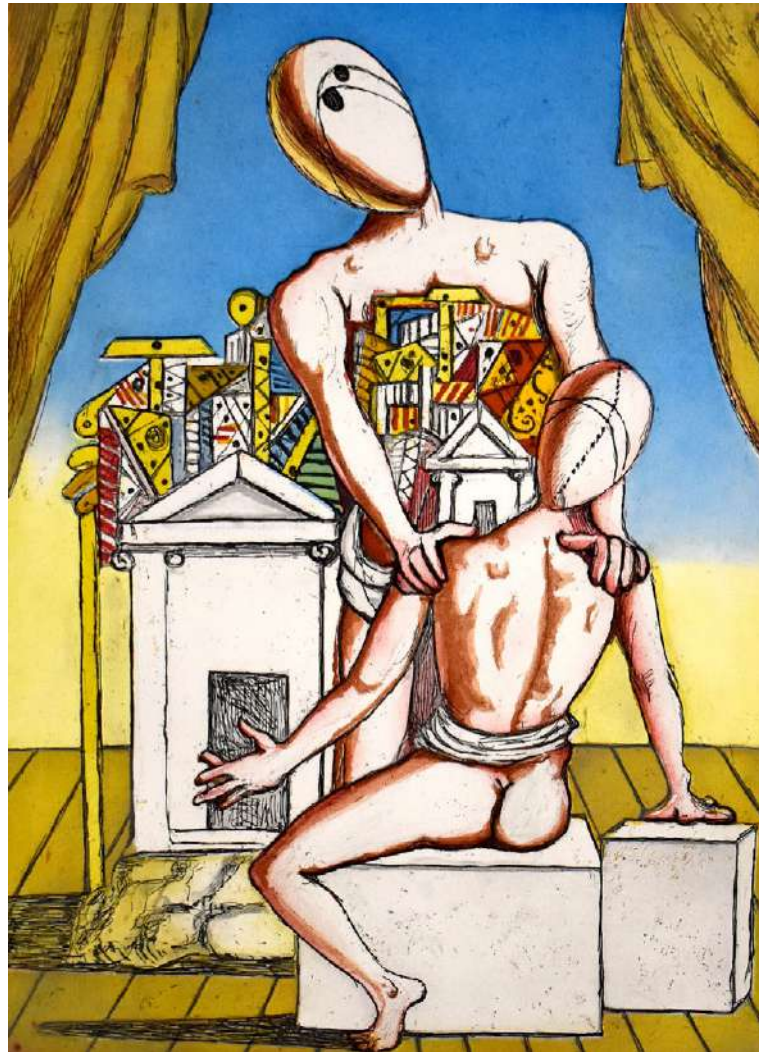
45 X 69 CM. / 17.7 X 27.2 IN.
REFERENCE: MAEGHT 1022



GIORGIO DE CHIRICO 1888-1978
ORESTES AND PYLADES (SECOND VERSION), 1970

ORIGINAL HAND SIGNED AND NUMBERED ETCHING AND AQUATINT IN
COLOURS ON MARAIS WOVE PAPER

70 x 50.5 CM. / 27.6 x 19.9 IN
REFERENCE: BRANDANI 8



“THE SUBJECT OF THIS WORK BETWEEN TWO TOWNS IS VERY CLOSE TO ME.
LIVING IN TEL AVIV WHILE THE GALLERY IS IN LONDON I FEEL THE DUALITY
THAT SO MANY OF THE FOREIGN SCHOOL OF
PARIS ARTISTS FELT LIVING THERE.”

-OFER

ZAO WOU-KI 1921-2013
BETWEEN TWO TOWNS, 1955

ORIGINAL HAND SIGNED, NUMBERED AND DATED
LITHOGRAPH IN COLOURS ON RIVES WOVE PAPER

55 X 65 CM. / 21.7 X 25.6 IN.
REFERENCE: ÅGERUP 94



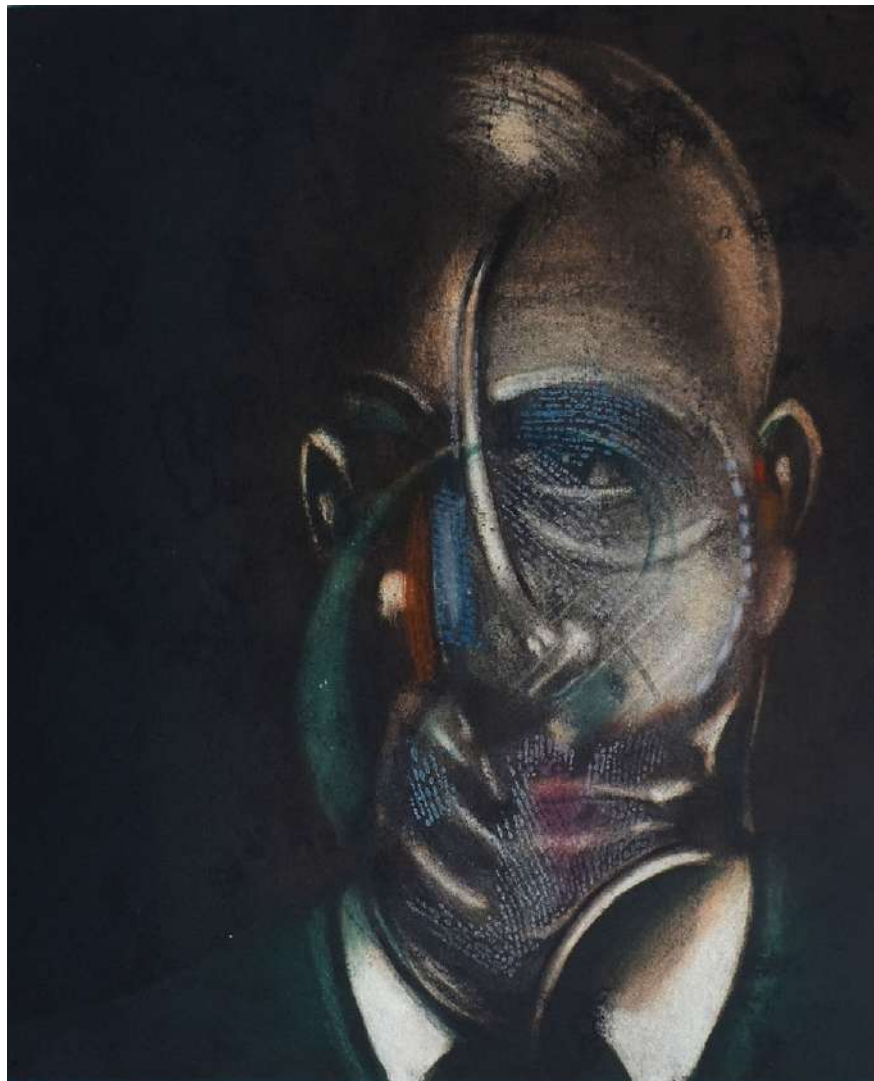
“I FELL IN LOVE WITH BACON’S WORK AT MY FIRST EVER ART FAIR.
THE STAND ACROSS THE AISLE EXHIBITED SEVERAL OF HIS PRINTS.
I MUST HAVE BEEN 15 YEARS OLD AND CONNECTED TO THE EXISTENTIALIST IMAGERY.”

- OFER

FRANCIS BACON 1909-1992
PORTRAIT OF MICHEL LEIRIS, 1976 - 78

ORIGINAL HAND SIGNED AND NUMBERED ETCHING AND
AQUATINT IN COLOURS ON ARCHES WOVE PAPER

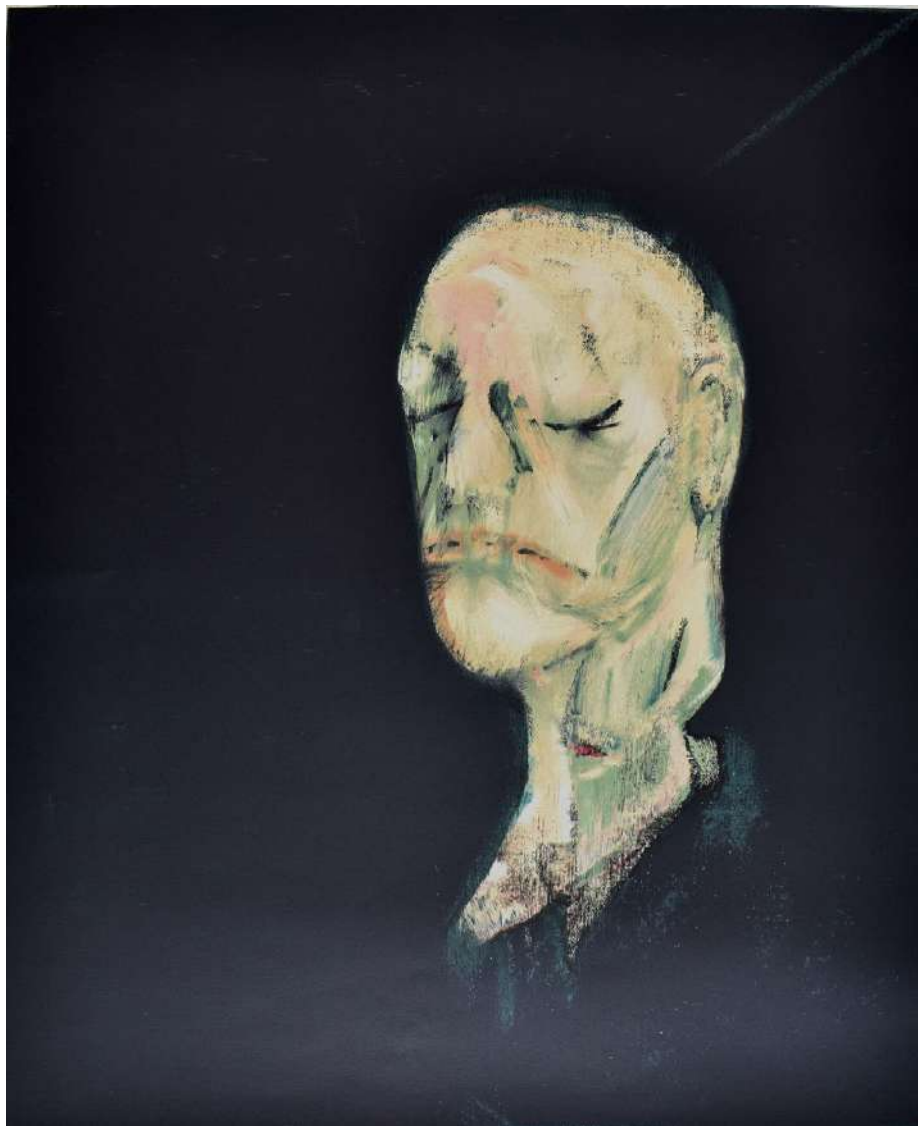
67.5 X 52 CM. / 26.6 X 20.5 IN.
REFERENCE: TACOU 34, SABATIER 2.



FRANCIS BACON 1909-1992
STUDY OF A PORTRAIT II, AFTER THE LIFE MASK OF WILLIAM BLAKE, 1991

ORIGINAL HAND SIGNED AND INSCRIBED LITHOGRAPH IN
COLOURS ON BFK RIVES WOVE PAPER

80 X 60 CM. / 31.5 X 23.6 IN.
REFERENCE: TACOU 29; SABATIER 27



SAM FRANCIS 1923-1994
UNTITLED SFE-003 (BLUE, RED AND YELLOW), 1982

ORIGINAL HAND SIGNED AND INSCRIBED ETCHING AND AQUATINT
IN COLOURS ON SOMERSET WOVE PAPER

82.2 X 65.4 CM. / 32.4 X 25.8 IN.
REFERENCE: LEMBARK I.35



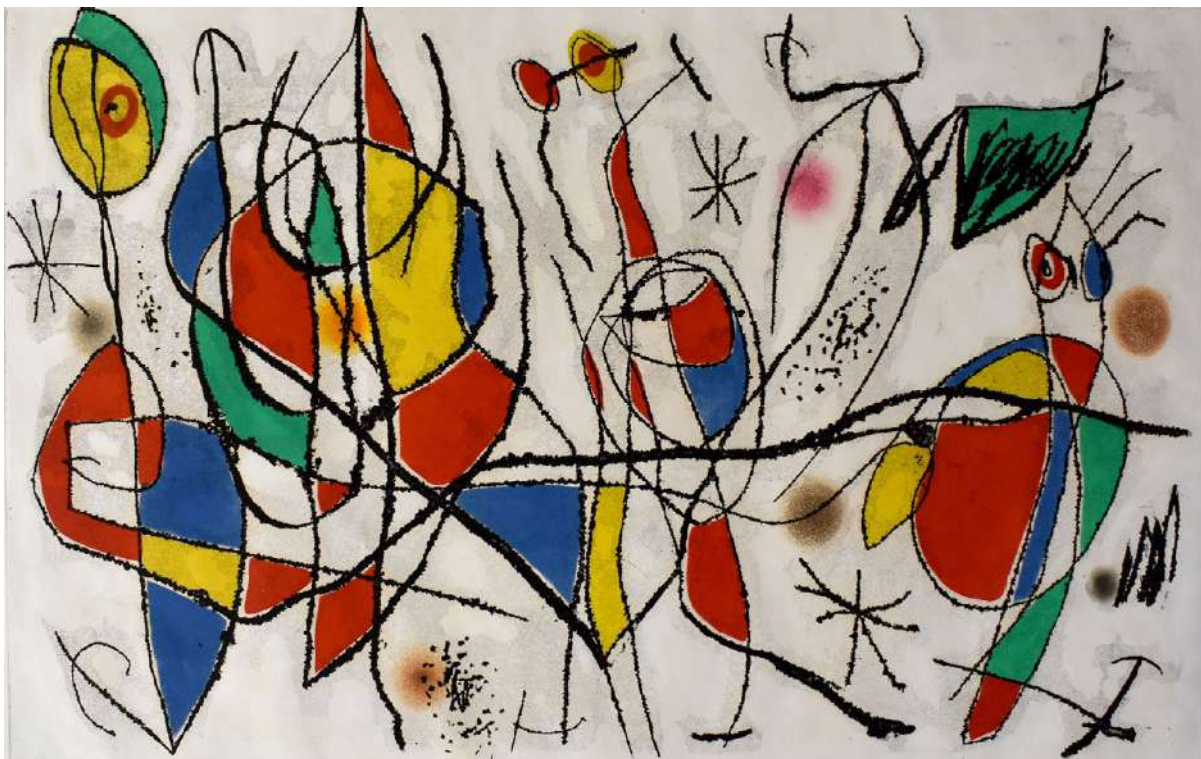
“I REMEMBER FALLING IN LOVE WITH THIS WORK THE FIRST TIME I SAW IT.
IT IS PURE ENERGY, PASSION AND VITALITY TO ME: ONE OF THE BEST EXAMPLES
OF JOAN MIRÓ, GENIUS OF PRINTMAKING.

-DANIELA

JOAN MIRÓ 1893-1983
THE SUNDAY GUEST I, 1969

ORIGINAL HAND SIGNED AND NUMBERED ETCHING WITH AQUATINT IN
COLOURS ON ARCHES WOVE PAPER

79.8 X 115.5 CM. / 31.4 X 45.5 IN.
REFERENCE: DUPIN 480





JOAN MIRÓ 1893-1983
WOMAN AND BIRD IN FRONT OF THE MOON, FROM: LAUREL'S NO. 1, 1947

ORIGINAL HAND SIGNED AND NUMBERED ETCHING AND
AQUATINT ON WOVE PAPER

20.6 x 25.4 CM. / 8.1 x 10 IN.
REFERENCE: DUPIN 51; CRAMER 10



LILL TSCHUDI 1911-2004
IN THE CIRCUS, 1932

ORIGINAL HAND SIGNED, NUMBERED AND TITLED LINOCUT IN
COLOURS ON TISSUE THIN JAPAN PAPER

26.7 x 29.3 CM. / 10.5 x 11.5 IN.
REFERENCE: COPPEL LT 23

“MOORE’S RECLINING FIGURES ALWAYS FASCINATED ME.
EVER SINCE SEEING HIS MONUMENTAL RECLINING FIGURE SCULPTURE IN THE
ENTRANCE OF THE TEL AVIV MUSEUM OF ART AS A CHILD.”

- OFER

HENRY MOORE 1898-1986
THREE RECLINING FIGURES, 1971/72

ORIGINAL HAND SIGNED, DATED AND NUMBERED LITHOGRAPH
IN COLOURS ON ARCHES WOVE PAPER

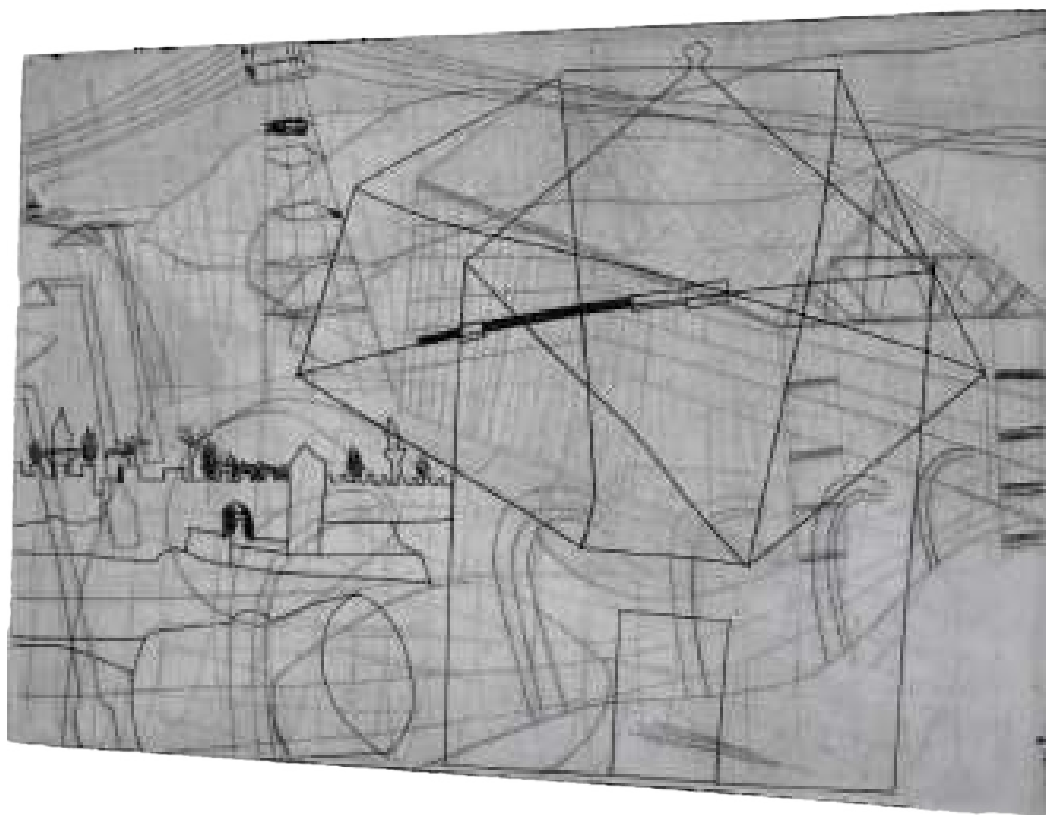
65.4 X 50 CM. / 25.7 X 19.7 IN.
REFERENCE: CRAMER 183



BEN NICHOLSON 1894-1982
MOONSHINE, 1965

ORIGINAL HAND SIGNED, DATED AND
NUMBERED ETCHING ON WOVE PAPER

32 X 38 CM. / 12.6 X 15 IN.
REFERENCE: LAFRANCA 31





HENRI MATISSE 1869-1954
STANDING DANCER, LEANING, FROM: TEN DANCERS, 1925/26

ORIGINAL HAND SIGNED AND NUMBERED LITHOGRAPH ON
ARCHES WOVE PAPER

50.1 x 32.4 CM. / 19.7 x 12.8 IN.
REFERENCE: DUTHUIT 482



HENRI MATISSE 1869-1954
ODALISQUE WITH BRASERO AND BOWL OF FRUITS, 1929

ORIGINAL HAND SIGNED AND NUMBERED LITHOGRAPH
ON ARCHES WOVE PAPER

38 x 57.2 CM. / 14.9 x 22 IN.
REFERENCE: DUTHUIT 504

“KADAR HAS ALWAYS BEEN ONE OF MY FAVOURITE ARTISTS.
HIS WORKS COMBINES SERENITY, BEAUTY, AND AESTHETICS WITH
BALANCED CONSTRUCTIVE COMPOSITIONS.”

- JACOB

BÈLA KÀDÀR 1877-1956
CONSTRUCTIVIST CITYSCAPE WITH GREEN HORSE, CA. 1920S

SIGNED WATERCOLOUR ON PAPER

27.8 x 20.2 CM. / 10.9 x 8 IN.





BÈLA KÀDÀR 1877-1956
THREE WOMEN BY THE TABLE, CIRCA 1930'S

SIGNED TEMPERA ON CARDBOARD

57.5 X 41 CM. / 22.6 X 16.2 IN.



HUGO SCHEIBER 1873-1950
SELF PORTRAIT WITH CIGAR, EARLY 1930'S

TEMPERA PAINTING ON PAPER LAID ON CARDBOARD

47 X 39.2 CM. / 18.5 X 15.4 IN.

"I WAS FASCINATED WITH LESSER URY.
SOME OF THE FIRST WORKS I EVER PURCHASED WERE HIS PASTELS.
I USED TO BUY THEM IN BERLIN, IN GALERIE GERDA BASSENGE AMONG
OTHER GALLERIES FOR MY COLLECTORS IN ISRAEL.

LATER I TRAVELLED WITH DR. SIBYLLE GROSS ALL OVER ISRAEL
TO LOOK FOR UNKNOWN LESSER URY WORKS,
HIDDEN FOR YEARS IN PRIVATE COLLECTIONS."

-JACOB

LESSER URY 1861-1931
THE SCULPTOR'S STUDIO, 1883

SIGNED AND DATED OIL ON CANVAS

92 X 73 CM. / 36.2 X 29 IN.

PROVENANCE: YEHUDA ELRAOI (1911-1992), NATANYA, ISRAEL.
YEHUDA ELROI WAS AN IMPORTANT ZIONIST, AUTHOR AND A BOARD
MEMBER OF THE TEL AVIV MUSEUM OF MODERN ART.
ELIEZER LEVIN, SAVION, ISRAEL.



MAX LIEBERMANN 1847-1935
DOUBLE STUDY OF A WOMAN'S BACK
WITH OUTSTRETCHED ARMS, CA. 1903-1905

SIGNED CHARCOAL DRAWING ON WOVE PAPER

47.4 X 31.5 CM. / 18.7 X 12.4 IN.

PROVENANCE: THE AUTHENTICITY OF THIS WORK HAS BEEN VERBALLY
CONFIRMED BY DR. MARGREET NOUWEN FROM
THE MAX LIEBERMANN ARCHIVE, BERLIN.



“MY PASSION FOR PRINTS BEGAN WITH THE LINOCUTS OF PABLO PICASSO. IT WAS MY FIRST INTRODUCTION TO PRINTMAKING, AND I WAS FORTUNATE ENOUGH TO CATALOGUE THE ENTIRE ARCHIVE OF PICASSO’S LINOCUT PRINTER, HIDALGO ARNÉRA.”

-STEPHEN

PABLO PICASSO 1881-1973
SEATED NUDE, 1962

ORIGINAL HAND SIGNED AND NUMBERED LINOCUT
IN COLOURS ON ARCHES WOVE PAPER

62 X 44 CM. / 24.4 X 17.3 IN.
REFERENCE: BLOCH 1086; BAER 1330



PABLO PICASSO 1881-1973
DAVID AND BATHSHEBA (AFTER LUCAS CRANACH) II, 1947

ORIGINAL HAND SIGNED AND NUMBERED LITHOGRAPH
ON ARCHES WOVE PAPER

66 x 50 CM. / 26 x 19.7 IN.
REFERENCE: MOURLOT 109 (SECOND STATE); BLOCH 440

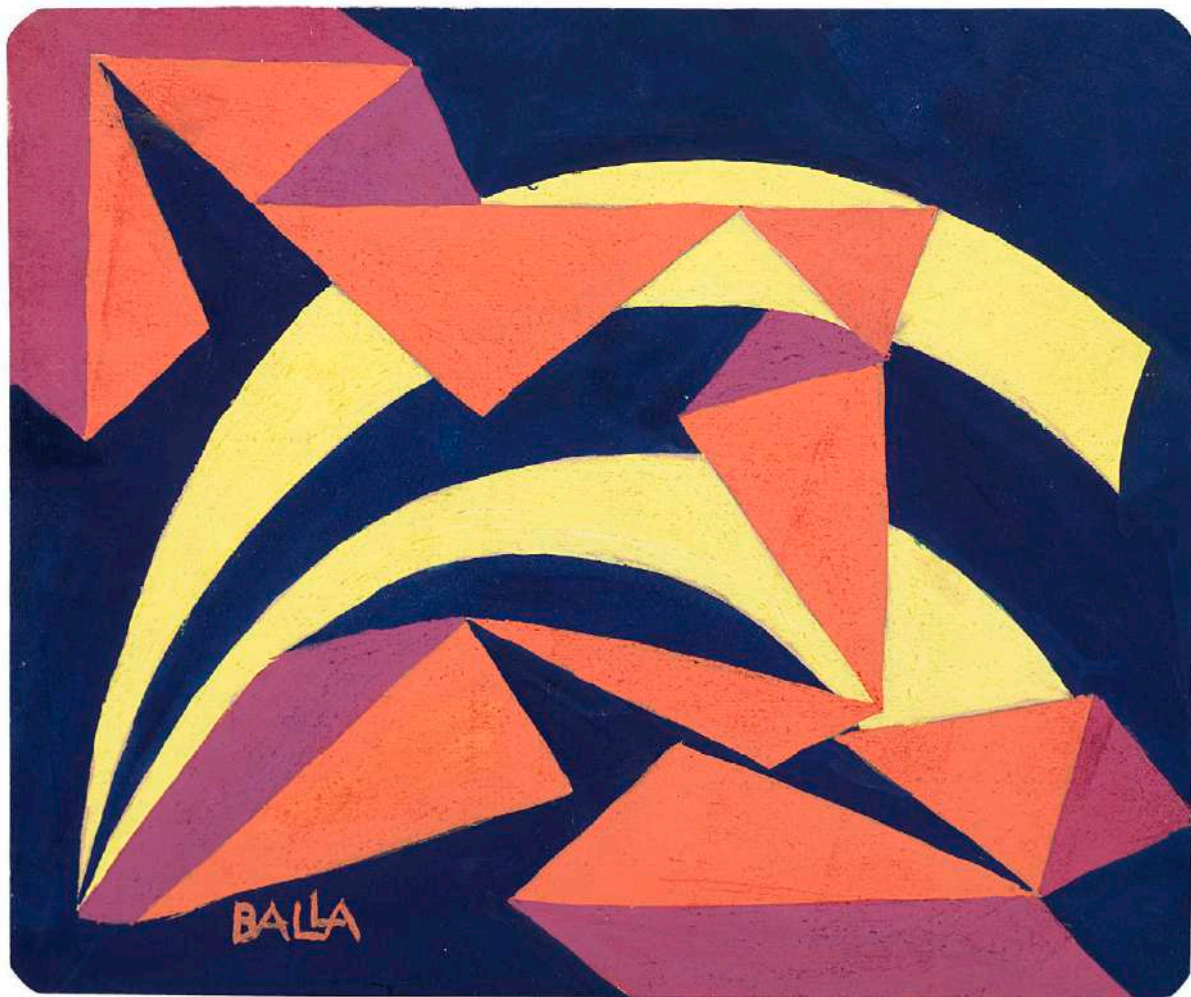


GIACOMO BALLA 1871-1958
FORMS SOUND, 1925/30

SIGNED TEMPERA ON CARD

19 X 22.7 CM. / 7.5 X 8.9 IN.
PROVENANCE: CASA BALLA ROME
GALLERIA MARESCALCHI, BOLOGNA
PRIVATE COLLECTION, TREVISO

THE WORK IS ACCOMPANIED BY A CERTIFICATE OF AUTHENTICITY
ISSUED BY LUCE BALLA. IT IS ALSO ACCOMPANIED BY A CERTIFICATE OF
AUTHENTICITY ISSUED BY MRS ELENA GIGLI
OF THE ARCHIVIO GIGLI, ROME N.2014/799.



GINO SEVERINI 1883-1966
THE VIOLIN, 1949

SIGNED PASTEL ON GREY WOVE PAPER

34 X 25.5 CM. / 13.4 X 10 IN.

PROVENANCE: GALLERIA SIANESI, MILAN
COLLECTION OF SERGIO SALERI, BRESCIA

THE WORK IS ACCOMPANIED BY A PHOTO-CERTIFICATE OF
AUTHENTICITY BY ROMANA SEVERINI BRUNORI DATED ON 31/03/2018.
THIS RECENTLY RE-DISCOVERED STUDY WILL ALSO BE INCLUDED
IN THE REVISED AND UPDATED CATALOGUE RAISONNÉ OF
SEVERINI PUBLISHED PREVIOUSLY BY MONDADORI IN 1988.

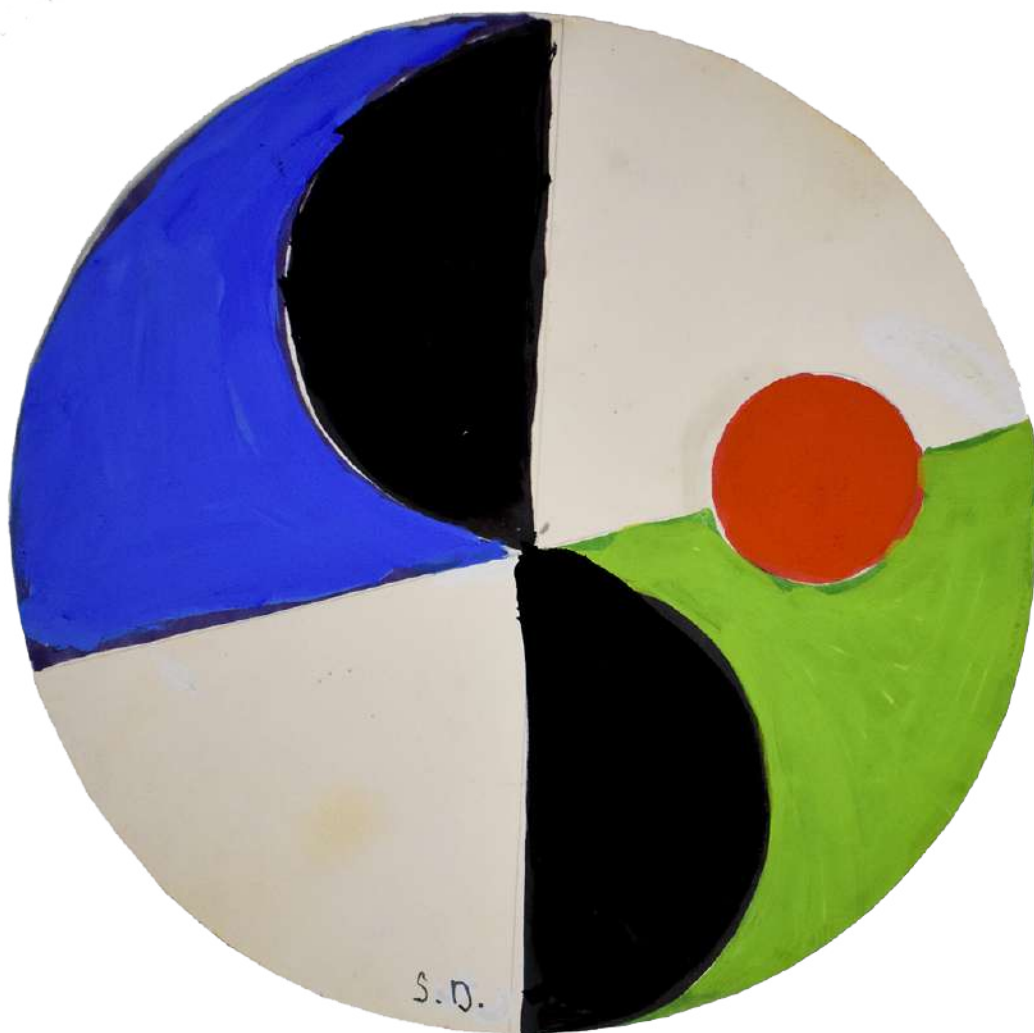


SONIA DELAUNAY 1885-1979
STUDY FOR A PLATE, 1969

SIGNED GOUACHE AND PENCIL DRAWING ON WOVE PAPER

23.5 CM. / 9.3IN. (DIAMETER)

PROVENANCE: SUCCESSION JACQUES DAMASE
JACQUES DAMASE (1930-2014) WAS A FRENCH PUBLISHER AND GALLERIST
WHO HAD A CLOSE CONNECTION TO SONIA DELAUNAY.
PRIVATE FRENCH COLLECTION, FRANCE



"I'VE ALWAYS LOVED HOW CALDER EXPRESSED HIMSELF WITH VIBRANT
COLOURS AND DYNAMIC SHAPES.
IT MAKES YOU FEEL ALIVE.

-DIAMANTE

ALEXANDER CALDER 1898-1976
BALANCED SPIRAL, 1969

SIGNED AND DATED GOUACHE AND INK ON
MBM ARCHES FRANCE WOVE PAPER

75 X 108 CM. / 29.5 X 42.5 IN.

PROVENANCE: PERLS GALLERIES, NEW YORK.
SECURITY PACIFIC NATIONAL BANK, LOS ANGELES, 1973
BANK OF AMERICA, CHARLOTTE. BANK OF AMERICA BENEFIT AUCTION
FOR NYU LANGONE MEDICAL CENTER, DECEMBER 2017.
PRIVATE COLLECTION.

THIS WORK IS REGISTERED IN THE ARCHIVES OF THE CALDER
FOUNDATION, NEW YORK, UNDER APPLICATION NUMBER A05429.



ALEXANDER CALDER 1898-1976
COMPOSITION XII, FROM: THE ELEMENTARY MEMORY, 1976

ORIGINAL HAND SIGNED AND NUMBERED LITHOGRAPH IN
COLOURS ON WOVE PAPER

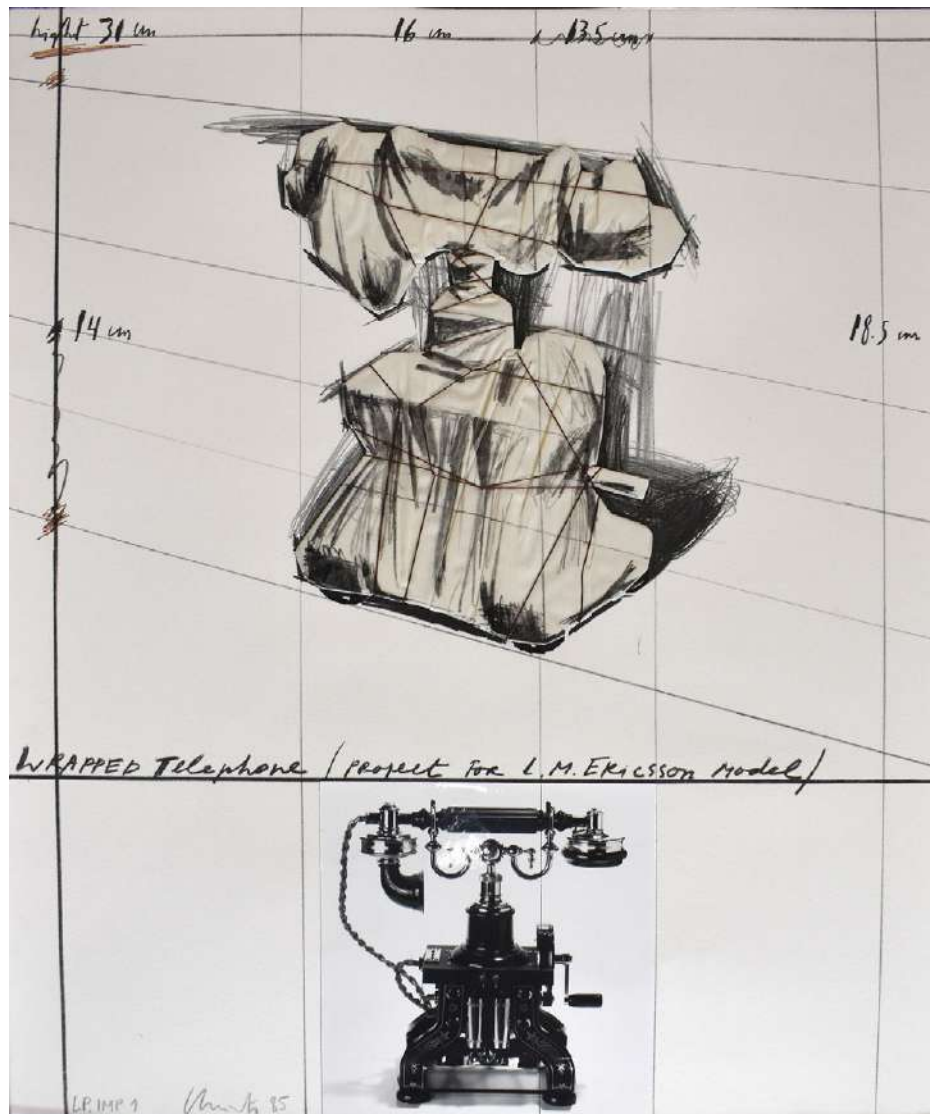
72 X 52 CM. / 28.4 X 20.5 IN.



CHRISTO 1935-2020
WRAPPED TELEPHONE, PROJECT FOR L. M. ERICSSON MODEL, 1985

ORIGINAL HAND SIGNED AND INSCRIBED LITHOGRAPH WITH COLLAGE
ON ARCHES WOVE PAPER MOUNTED TO MUSEUM BOARD

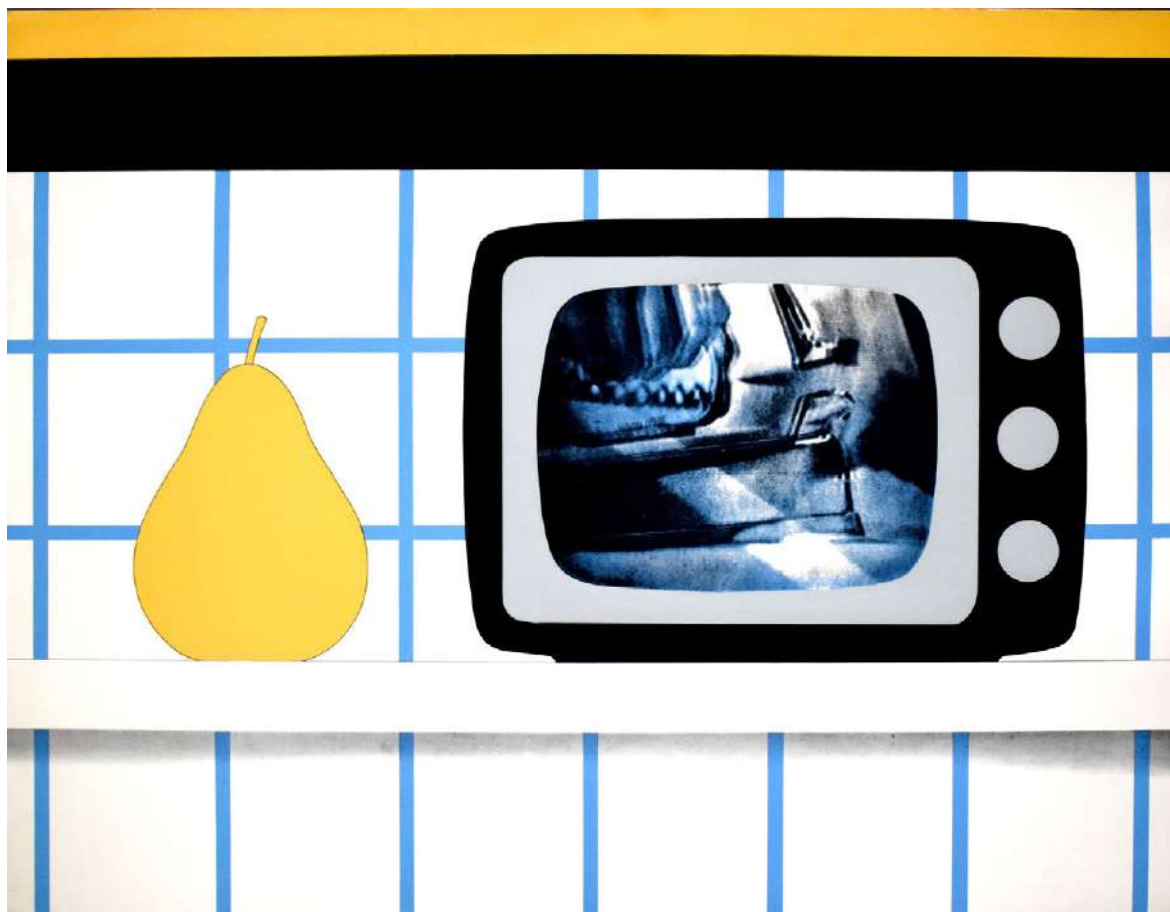
71 X 55.9 CM. / 28 X 22 IN.
REFERENCE: SCHELLMANN & BENECKE 119



TOM WESSELMANN 1931-2004
TV STILL LIFE, FROM: 11 POP ARTISTS, 1965/66

ORIGINAL HAND SIGNED AND NUMBERED SCREENPRINT
IN COLOURS ON WOVE PAPER

73.5 X 96 CM. / 28.9 X 37.7 IN.



“I LOVE THIS WORK;
I FIND THIS TO BE A PERFECT EXAMPLE OF MAN RAY’S OPEN LANDSCAPE
COMBINED WITH THE IDEA OF GAMES OF CHANCE OR LUCK.
TWO MAIN THEMES IN HIS OEUVRE BROUGHT TOGETHER PERFECTLY.”

- OFER

MAN RAY 1890-1976
FORTUNE II, 1973

ORIGINAL HAND SIGNED AND INSCRIBED LITHOGRAPH
IN COLOURS ON WOVE PAPER

55 X 75.5 CM. / 21.7 X 29.7 IN.
REFERENCE: ANSELMINO 4

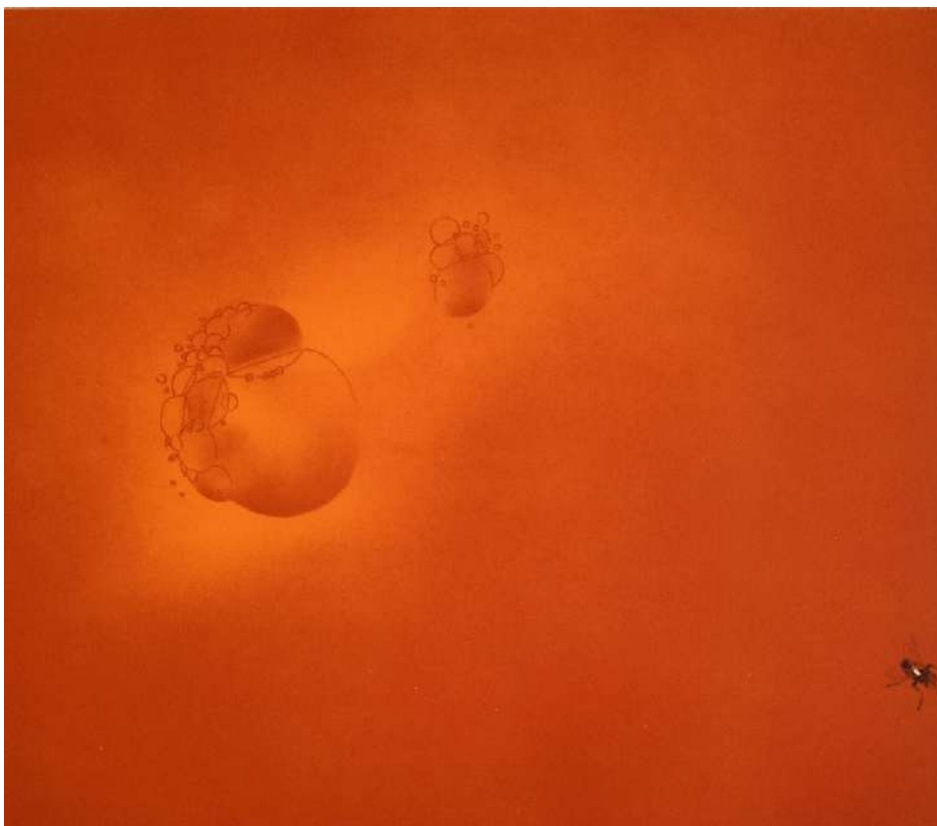




ED (EDWARD) RUSCHA (BORN 1937)
MR. RAY, 1975

ORIGINAL HAND SIGNED AND NUMBERED LITHOGRAPH
IN COLOURS ON WOVE PAPER

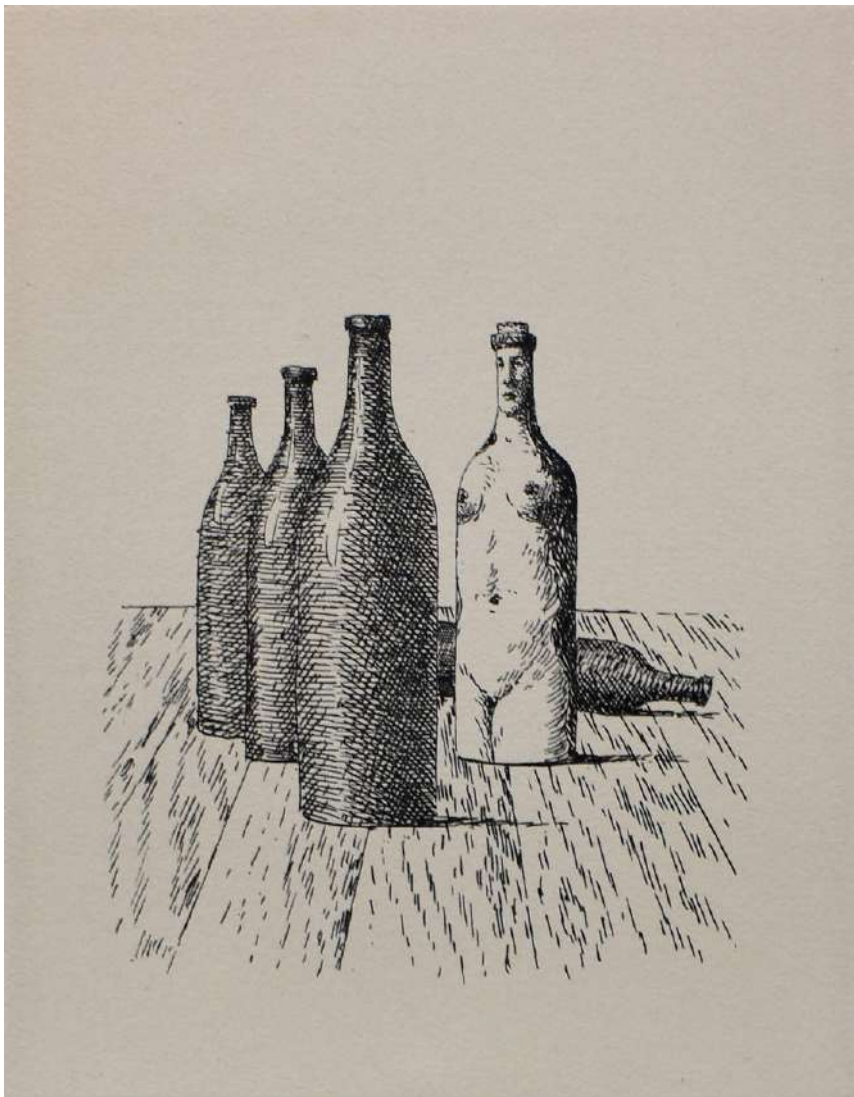
35 X 51.5 CM. / 13.8 X 20.3 IN.
REFERENCE: ENGBERG 86



ED (EDWARD) RUSCHA (BORN 1937)
BOILING BLOOD, FLY, 1969

ORIGINAL HAND SIGNED, DATED AND NUMBERED LITHOGRAPH
IN COLOURS ON WOVE PAPER

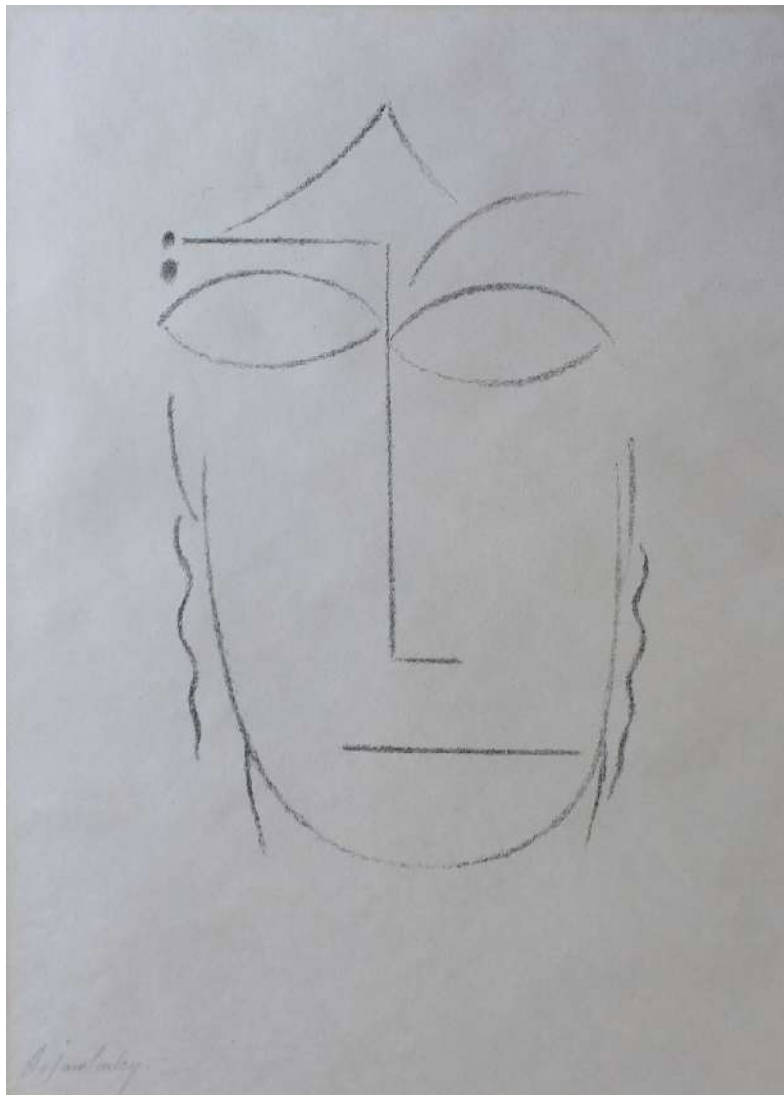
30.2 X 34.6 CM. / 11.9 X 13.6 IN.
REFERENCE: ENGBERG 27



RENÉ MAGRITTE 1898-1967
THE COUNTESS OF MONTE CRISTO, FROM: DAWN AT THE ANTIPODE, 1966

HAND SIGNED AND INSCRIBED ETCHING ON WOVE PAPER

39 X 28 CM. / 15.4 X 11 IN.
REFERENCE: KAPLAN & BAUM 6.



ALEXEJ VON JAWLENSKY 1864-1941
HEAD II, FROM: HEADS, 1922

ORIGINAL HAND SIGNED LITHOGRAPH ON JAPAN PAPER

50 X 40 CM. / 19.7 X 15.7 IN.
REFERENCE: ROSENBACH 19

"I'M HONOURED TO BE ABLE TO PRESENT THIS COMPLETE SET.
KANDINSKY CHOSE DELIBERATELY TO USE THREE DIFFERENT
PRINTING TECHNIQUES: ETCHING, WOODCUT AND LITHOGRAPHY.

THE REASON WAS TO BE ABLE TO SHOW THE VIEWER THE
UNIQUENESS OF EACH PRINTING TECHNIQUE.

THIS IS VERY SIMILAR TO WHAT WE ARE TRYING TO DO IN OUR GALLERY."

-OFER

WASSILY KANDINSKY 1866-1944
SMALL WORLDS, 1922

COMPLETE SET OF TWELVE LITHOGRAPHS, ETCHINGS AND WOODCUTS ON WOVE PAPER

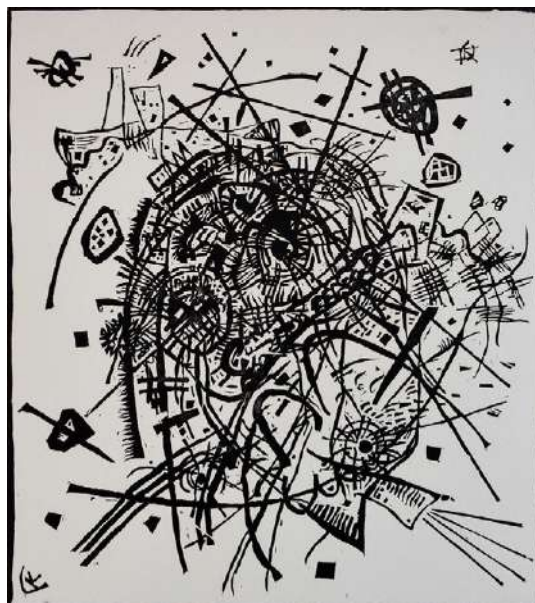
35.7 X 28.2 CM. / 14 X 11.1 IN. (AND SIMILAR)

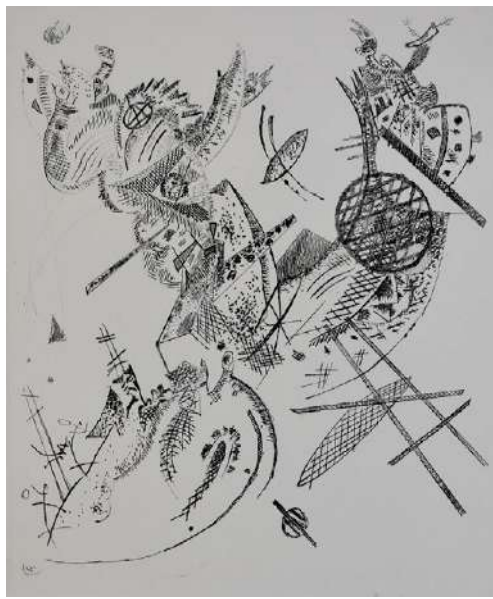
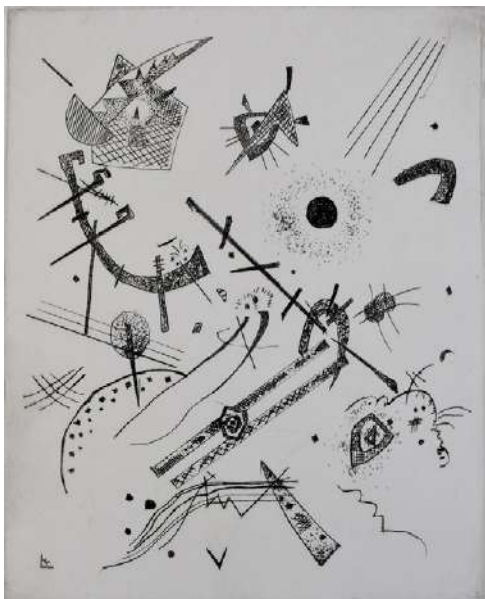
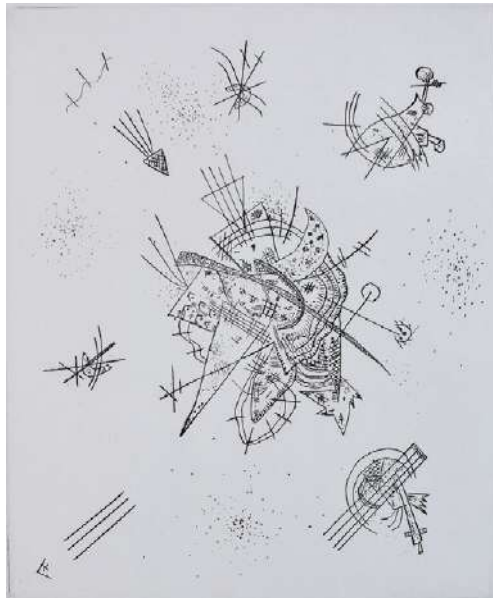
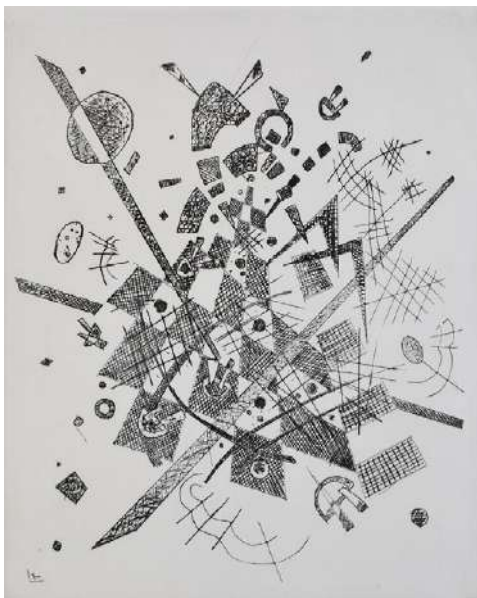
REFERENCE: ROETHEL 164-175

PROVENANCE: KARL & FABER, MUNICH, 25-26 NOVEMBER 1982, LOT 839.

WOLFGANG WITTROCK (B. 1947), DUSSELDORF
DEUTSCHE BANK COLLECTION, DEACCESSIONED







“IN MY FIRST YEAR IN PARIS, I ACCIDENTALLY BOUGHT A
LARGE GROUP OF VILLON PRINTS WITHOUT KNOWING MUCH ABOUT HIM.
I REMEMBER HOW AMAZED I WAS TO DISCOVER THE DEPTH OF HIS PRINTMAKING”

- OFER

JACQUES VILLON 1875-1963
THE SMALL MECHANICAL WORKSHOP, 1914

ORIGINAL HAND SIGNED AND NUMBERED ETCHING
ON ARCHES LAID PAPER

24 X 32 CM. / 9.4 X 12.6 IN.

REFERENCE: DE GINESTET & POUILLON E.289



“IN THIS PAINTING THE RED BACKGROUND IS AN ABSTRACT PAINTING,
A CELEBRATION OF COLOURS.

WHILE THE REALISTIC FIGURE OF THE SEATED MAN IS A SYMBOL
THE SACRIFICED VICTIM OF ALL VIOLENCE, AGGRESSION, AND INJUSTICE.

THIS THEME FIRST APPEARED IN MY OEUVRE IN 1993
AND IS STILL PRESENT TODAY.”

-JACOB

JACOB GILDOR (BORN 1948)
RECLINING FIGURE ON RED BACKGROUND, 2013

SIGNED OIL PAINTING ON PANEL

80 X 120 CM. / 31.5 X 47.2 IN.



THIS CATALOGUE IS PUBLISHED ON THE OCCASION OF THE EXHIBITION

40 FOR 40
40 WORKS FOR 40 YEARS OF GILDEN'S ARTS

OCTOBER TO DECEMBER 2021

EDITION: 1,000 CATALOGUES

DIRECTOR: OFER GILDOR

GALLERY MANAGER: DANIELA BOI

HEAD OF RESEARCH: STEPHEN D. GALLAGHER

EXHIBITIONS & DESIGN EXECUTIVE: DIAMANTE BAGNASCO

PUBLISHER: GILDEN'S ART GALLERY, LONDON

CATALOGUE DESIGN: DIAMANTE BAGNASCO

PRINTER: BLACKMORE LTD.

REMARKS:

DIMENSIONS LISTED REFER TO THE SHEET SIZE
POSSIBLE COLOUR DIFFERENCES BETWEEN THE REPRODUCTION OF IMAGES
IN THE PRINTED CATALOGUE AND THE ORIGINAL ARTWORKS MAY EXIST,
BUT EVERY EFFORT HAS BEEN MADE TO DEPICT
THESE WORKS AS TRUE TO THEIR APPEARANCE.

ALL WORKS INCLUDED IN THIS CATALOGUE ARE AVAILABLE FOR SALE.



GILDEN'S ART GALLERY
74, HEATH STREET HAMPSTEAD,
LONDON NW3 1DN

OPENING TIMES
MONDAY TO FRIDAY 8:30 - 5:00
SATURDAY TO SUNDAY 11:00 - 5:00

E: [INFO@GILDENSARTS.COM](mailto:info@gildensarts.com)
T: +44 (0) 207435 3340
[WWW.GILDENSARTS.COM](http://www.gildensarts.com)